

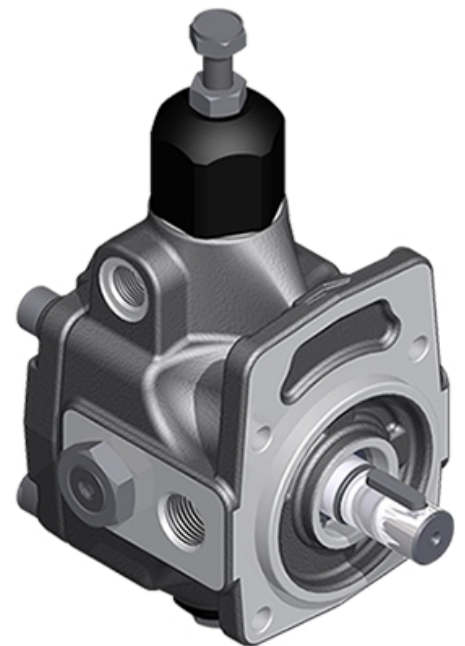


PLP Pumps

Series/Model Code	Max. Geometric Displacement (cm ³ /rev)	Max. Flow Rate at 1450 rpm (L/min)	Max. Operating Pressure (bar)	Speed Rotation Range (rpm)
01-PLP-05-16	16	23	120	800-1800
01-PLP-1-20	20	29	100	800-1800
01-PLP-1-25	25	36	100	800-1800
01-PLP-1-32	32	47	100	800-1800
01-PLP-2-40	40	58	100	800-1800
01-PLP-2-50	50	73	100	800-1800
01-PLP-2-63	63	92	100	800-1800
01-PLP-3-80	80	116	90	800-1800
01-PLP-3-100	100	145	90	800-1800
01-PLP-3-120	120	174	90	800-1800

FEATURES

- ROTATION DIRECTION: Right hand (clockwise if viewed from shaft end)
- MOUNTING FLANGE: Flange 4 bolt (UNI ISO 3019/2) and flange like gear pump size 2 (only for 01-PLP-05)
- PORT CONNECTION: GAS BPS (UNI ISO 228/1) threads; SAE
- PRESSURE COMPENSATOR: Mechanical, direct
- OTHER: All pumps are equipped with volume adjustment unit (flow adjuster)



Only on request arrangement for coupling to all Berarma pumps and to main other types of pumps available on fluid power market

For more information, consult the full catalog by clicking [here](#)