

HDAW

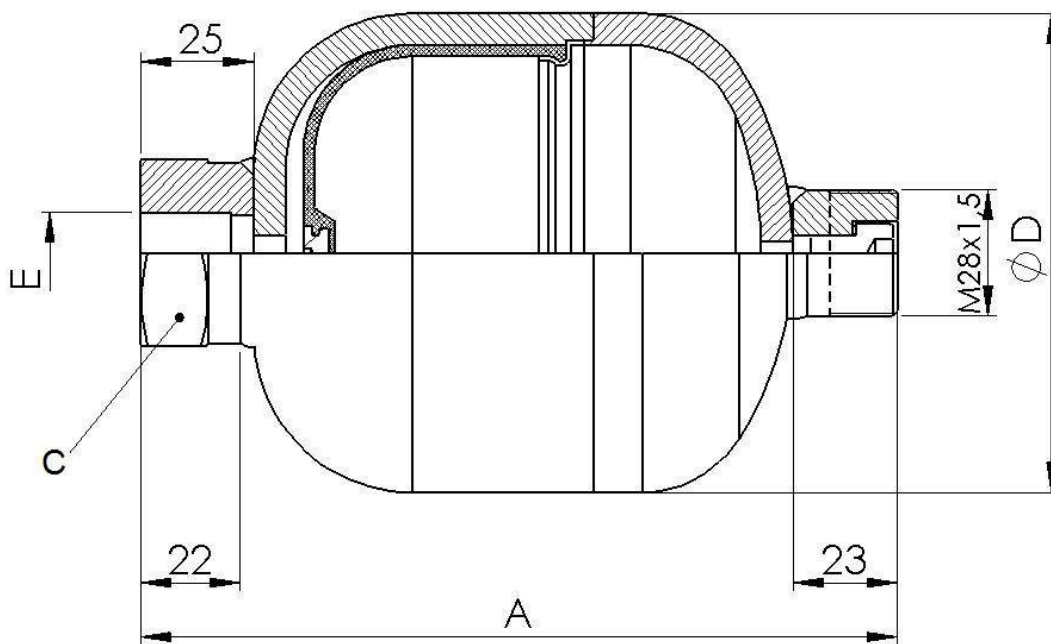
DIAPHRAGM ACCUMULATOR



Maximum working pressure PS: 210 bar

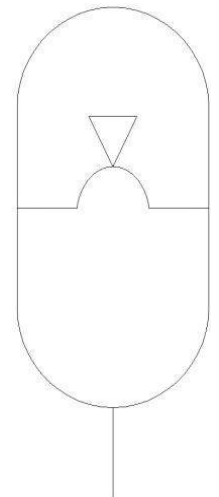
Nominal capacity: 0.35 to 0.75 litres

1 – OPERATING PRINCIPLE



- Gas-loaded accumulator is a equipment that allows, on hydraulic circuits, a notable energy concentration in limited spaces. Since liquids are basically incompressible, and therefore are not able to concentrate energy, this goal is achieved using the compressibility of gases.

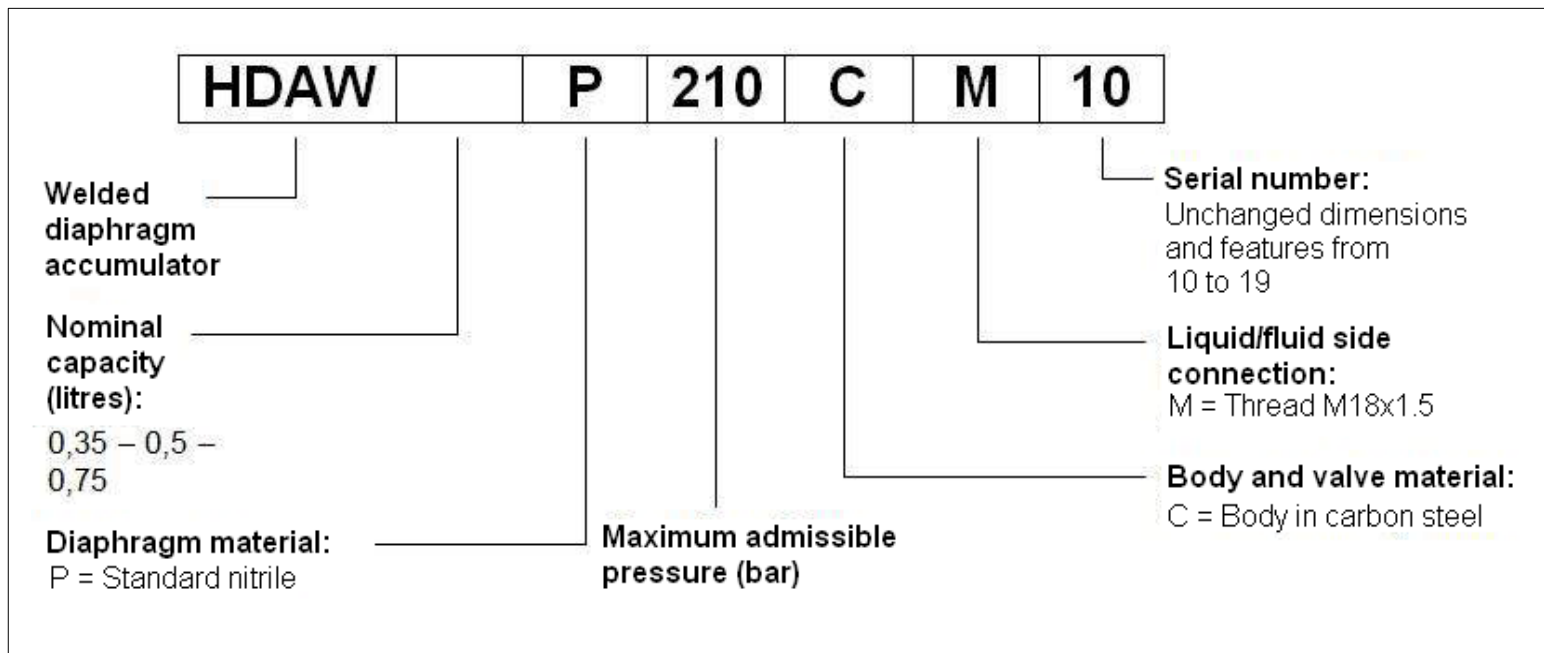
2 – HYDRAULIC SYMBOL



3 – DIMENSIONS

Model	Maximum working pressure	Nominal volume	Net weight	Fluid connection	Dimension		SW	Maximum pressure ratio (P2/P0)	Maximum flow (L/min)
				E	A (mm)	D (mm)			
HDAW-0,35	210	0,35	1,9	M18x1,5	143	97	32	8/1	80
HDAW-0,5		0,5	2,6		167	106			
HDAW-0,75		0,75	2,8		176	125	41		

4 – IDENTIFICATION



5 – PERFORMANCE

Maximum working pressure PS	210 bar
Testing pressure PT	PS x 1,5 bar
Temperature range, min and max TS	-10°C to +80°C
Pressure ratio (P ₂ /P ₀)	8:1
Nominal capacity	0,35 – 0,5 – 0,75 litres

6 – CONSTRUCTION FEATURES

The standard version includes:

- Body in welded carbon steel, externally polished and painted with RAL 5015 blue anti-rust coating.
- Diaphragm in nitrile rubber (P).
- Threaded gas side connection: M28x1,5.
- Threaded fluid side connection: M18x1,5.

- 1 – HT reserves the right to change informations of this catalog without previous warning.
 2 – Copy is forbidden.
 3 – If not indicated, dimensions in millimeters.

