



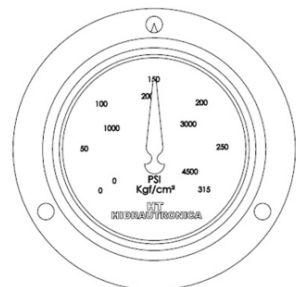
**HM**

**PRESSURE GAUGE**

**Pressure scale:**

10 – 30 – 50 – 100 – 200 –  
250 – 400 – 600 – 700

### 1 – OPERATING PRINCIPLE



### 2 – HYDRAULIC SYMBOL

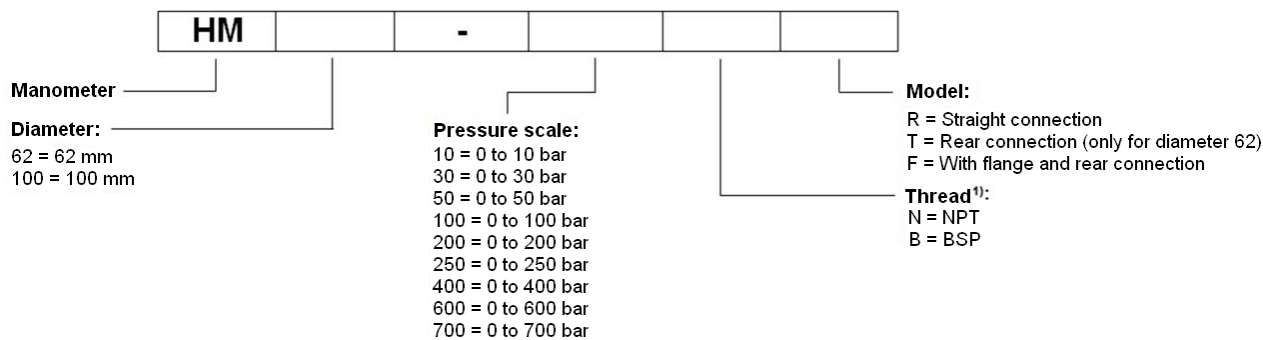


- The HM manometers are devices that allow the measurement of pressure in hydraulic circuits, even with pulsations and vibrations;
- Can be supplied with straight, rear or flanged threads;
- They are available in 9 different classes of pressure;
- Box in stainless steel and interior made of brass;
- Filling with glicerín.

### 3 – TECHNICAL DATA

Pressure	bar	10 – 30 – 50 – 100 – 200 – 250 – 400 – 600 – 700
Ambient temperature	°C	-20 to +60
Fluid temperature		
Storage temperature		-40 to +70
Diameters	mm	62 – 100
Material	Box	Stainless steel
	Internal	Brass
Connection	Ø62	1/4" NPT or 1/4" BSP
	Ø100	1/2" NPT or 1/2" BSP

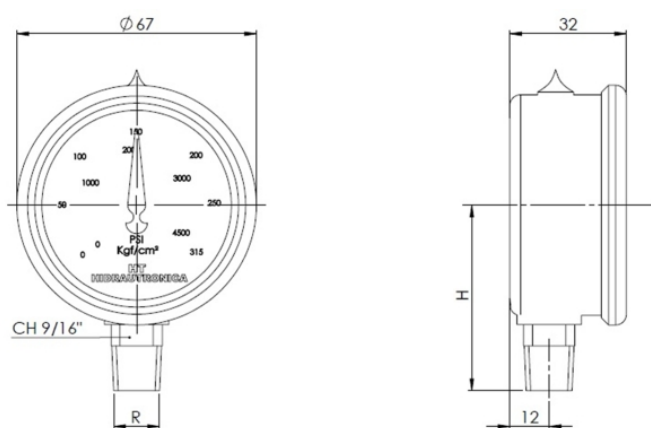
#### 4 – IDENTIFICATION



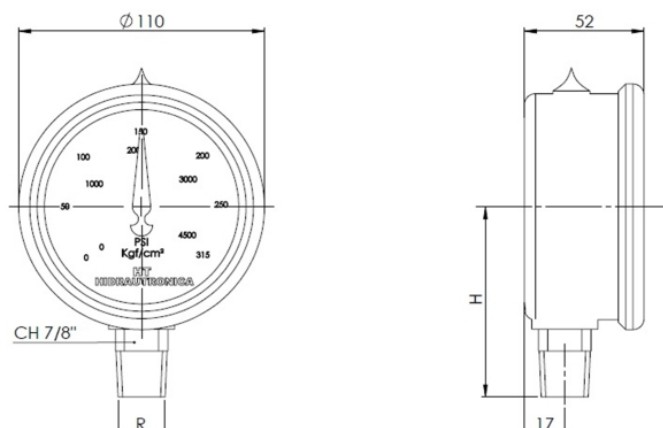
1 – For values of connection threads, see item 5 – Dimensions.

#### 5 – DIMENSIONS

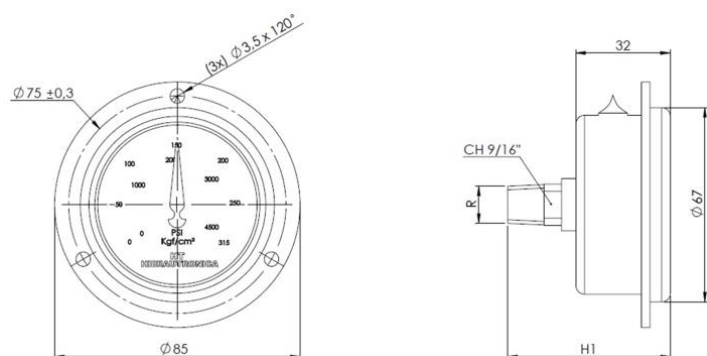
##### - HM62...R:



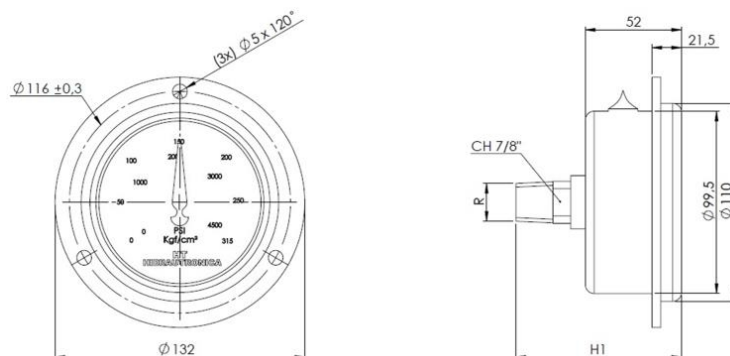
##### - HM100...R:



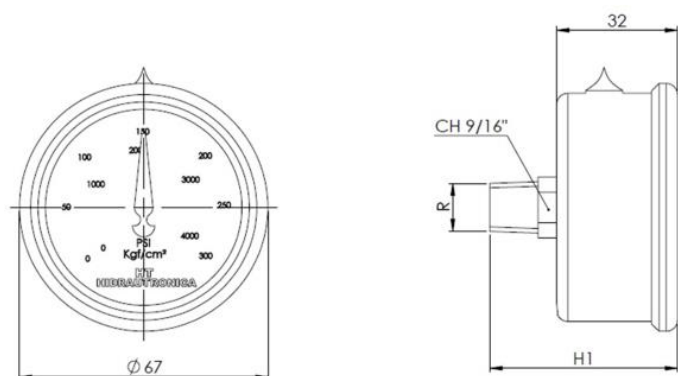
##### - HM62...F:



##### - HM100...F:



##### - HM62...T:



	HM62...R		HM62...F		HM62...T		HM100...R		HM100...F	
R	1/4"						1/2"			
	NPT	BSP	NPT	BSP	NPT	BSP	NPT	BSP	NPT	BSP
H	51	50	51	50	51	50	82,5	83	82,5	83
H1	52	51	52	51	52	51	80,5	81	80,5	81

Hole for the panel	
62 mm	100 mm
Ø65,5 <sup>±1,0</sup>	Ø104 <sup>±2,0</sup>

1 – HT reserves the right to change information of this catalog without previous warning.

2 – Copy is forbidden.

3 – If not indicated, dimensions in millimetres.

