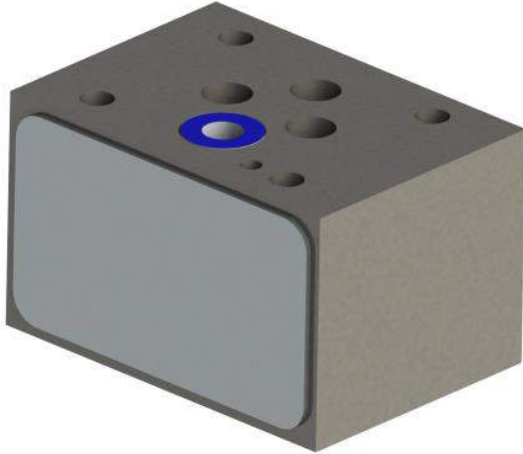


HMVR

CHECK VALVE

10 SERIES



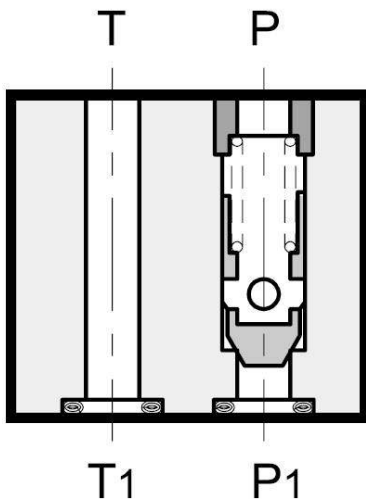
MODULAR TYPE

CETOP 03

P máx: 350 bar

Q máx (consult table on item 2)

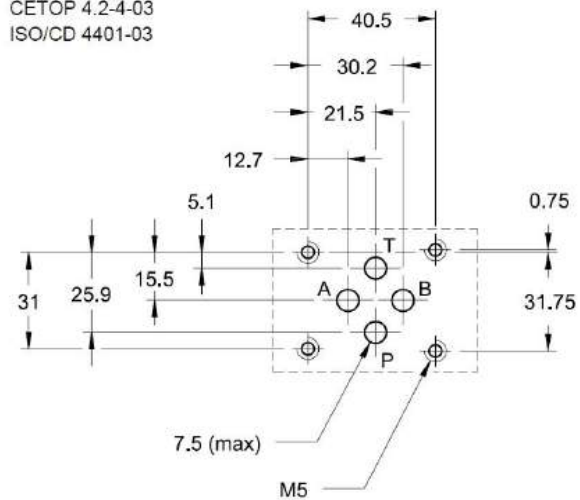
1 – OPERATING PRINCIPLE



- The HMVR valve is made on modular version with mounting surfaces according to ISO and CETOP standards.
- It is used to avoid oil returns, leakage ou generate backpressure.
- It can be installed quickly under the CETOP 3 electrical directional valve, without the use of tubes, using suitable straps or bolts.
- Available with a check valve in P, T or in both directions.
- Versions (see hydraulic symbols table on item 4):
 - HMVR-SP: check valve on line P
 - HMVR-ST: check valve on line T
 - HMVR-SPT: check valve on lines P and T
 - HMVR-SA: check valve on line A
 - HMVR-SB: check valve on line B

2 – MOUNTING PLAN

CETOP 4.2-4-03
 ISO/CD 4401-03



3 – IDENTIFICATION



CETOP 03 modular check valve

Opening pressure:
 - = 3,5 bar (standard)
 1 = 0,5 bar
 3 = 5,2 bar

SP = check valve on line P
 SA = check valve on line A
 SB = check valve on line B
 ST = check valve on line T
 SPT = check valve on lines P and T

Joint types:

- = Mineral oils
 V = Viton for special fluids

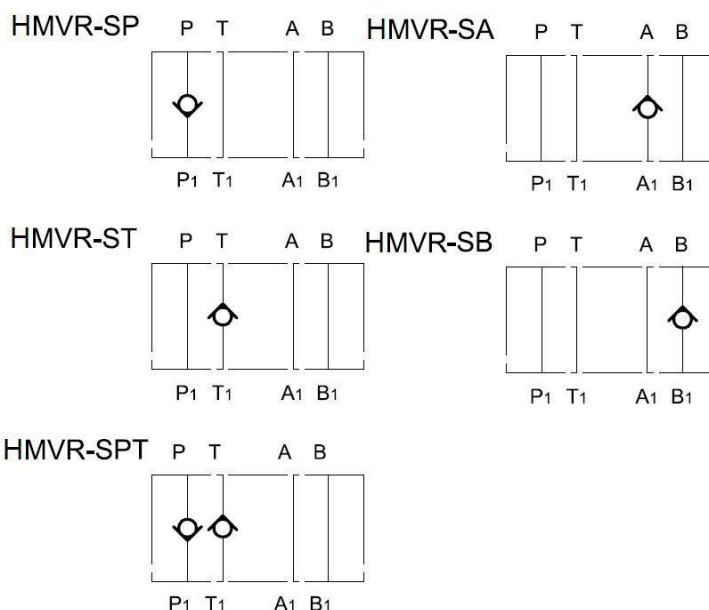
Serial number:

The dimensions remain unchanged from 10 to 19

4 – TECHNICAL DATA (mineral oil with viscosity of 36 cSt at 50°C)

Maximum operating pressure	bar	350
Check valve opening pressure		3,5 – 0,5 – 5,2
Maximum flow rate on controlled lines	L/min	50
Maximum flow rate on free lines		75
Ambient temperature	°C	-20 / +50
Fluid temperature		-20 / +80
Fluid viscosity	cSt	10 to 400
Recommended viscosity		58
Fluid contamination	According to NAS 1638 class 10	
Weight	kg	1

Hydraulic symbols

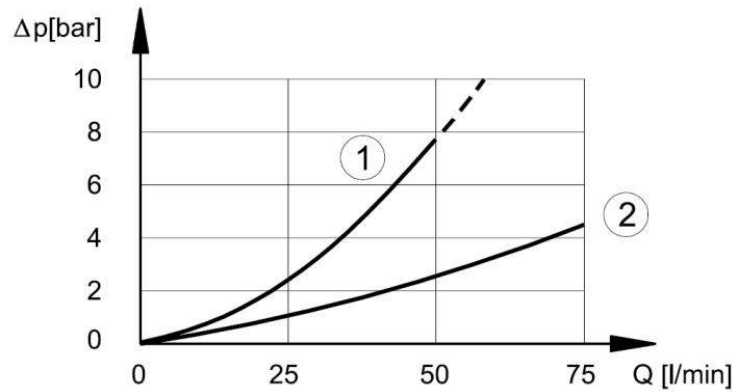


5 – HYDRAULIC FLUIDS

Use mineral oil-based hydraulic fluids with anti-foam agents and anti-rust additives.

For other types (glycol water, phosphate esters and others), consult our technical department.

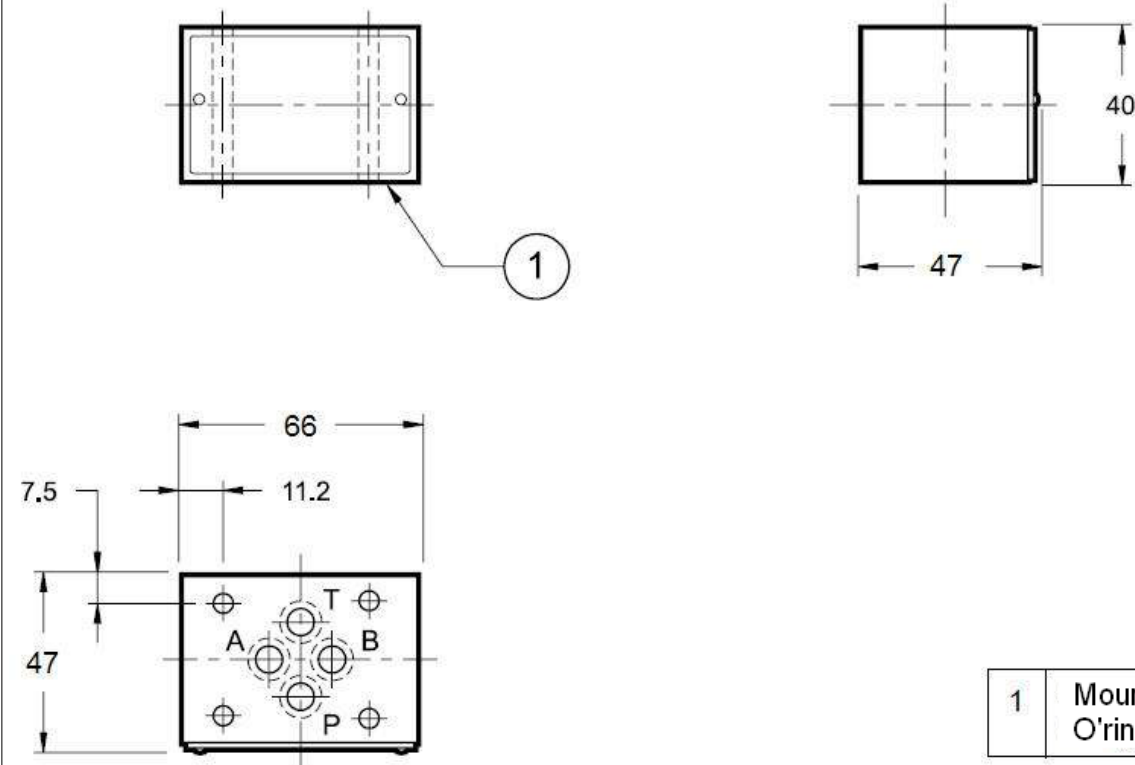
6 – CHARACTERISTIC CURVES (values for viscosity 36 cSt at 50°C)



- 1) Load losses at controlled lines.
- 2) Load losses at free lines.

Note: for values indicated by the 1) diagram curve, sum with the valve opening pressure.

7 - DIMENSIONS



1	Mounting surface with rings O'ring CI = 00097
---	--

- 1 – HT reserves the right to change information of this catalog without previous warning.
- 2 – Copy is forbidden.
- 3 – If not indicated, dimensions in millimeters.

