

HFB

BRACKETS

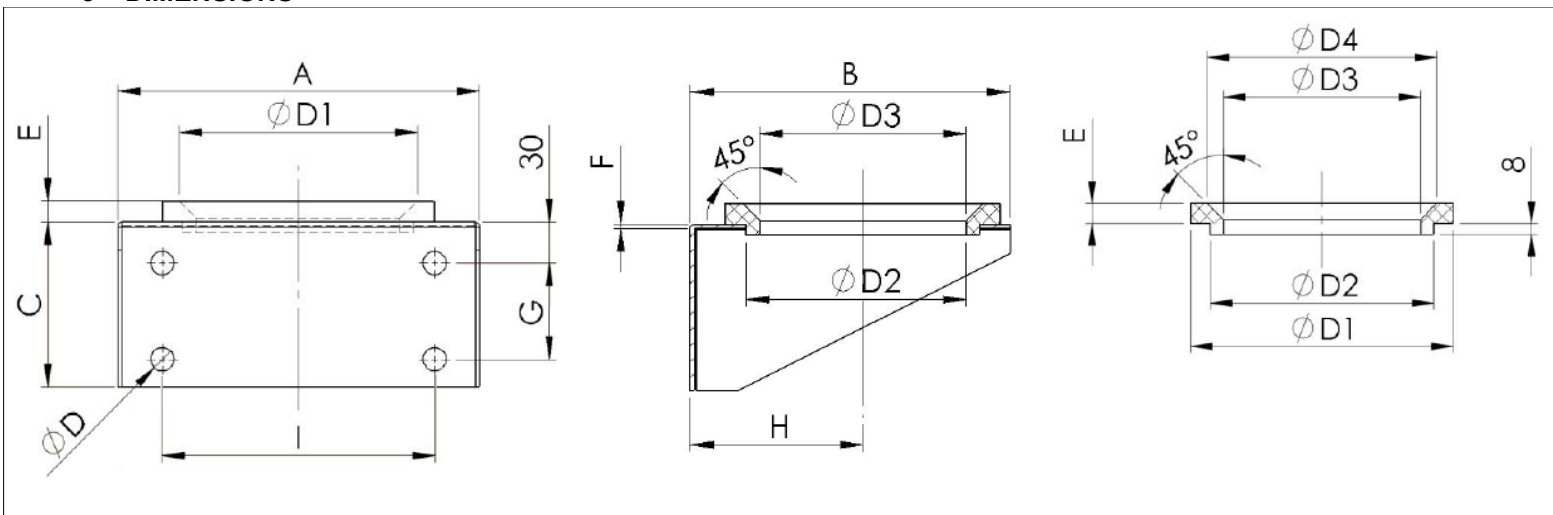
1 – CHARACTERISTICS

The fixing must be done in such a way as to not lie with outward stresses on the shell or on the accumulator connection. Especially for the horizontal assembling and for the most heavy types is necessary to use fixing equipments (clamps, brackets, etc.) that support the accumulator and avoid dangerous vibrations.

2 – CONSTRUCTION

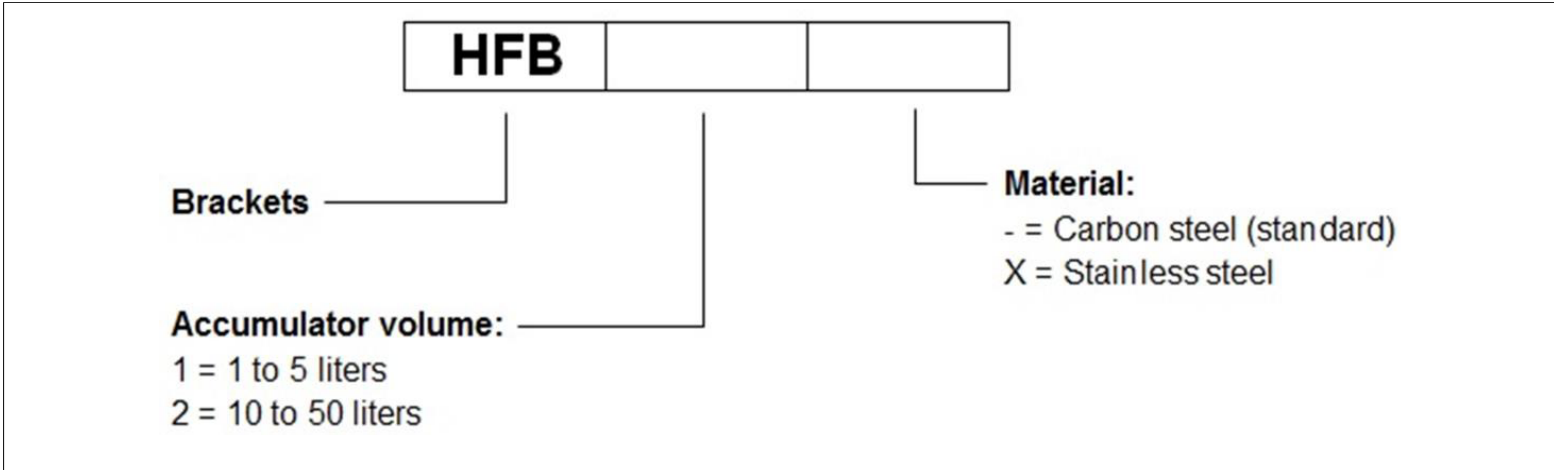
Clamps and brackets are manufactured with bi-chromatized carbon steel but, on request, they can be supplied entirely in stainless steel. The support is made of nitrile rubber. On request, other elastomers can be used.

3 – DIMENSIONS



Model	Accumulator volume (litres)	Weight (kg)	A	B	C	ØD	ØD1	ØD2	ØD3	E	F	G	H	I
HFB1	1 to 5	1,5	200	175	90	11	140	120	90	10	3	40	96	140
HFB2	10 to 50	3,6	260	232	120	17	200	170	150	15	3	70	125	200

4 – IDENTIFICATION



5 – SPARE PARTS

	Ref.	Accumulator volume (litres)	Weight (kg)	ØD1	ØD2	ØD3	ØD4	E
Support ring	H10266	1 to 5	0,13	140	120	90	112	10
	H10345	10 to 50	0,22	200	170	150	175	15

- 1 – HT reserves the right to change information of this catalog without previous warning.
- 2 – Copy is forbidden.
- 3 – If not indicated, dimensions in millimetres.

