

**D\*K\***  
**EXPLOSION-PROOF**  
**SOLENOID OPERATED**  
**DIRECTIONAL CONTROL VALVES**  
**ATEX, IECEx, INMETRO**

<b>DS3K*</b>	<b>ISO 4401-03</b>
<b>DL5BK*</b>	<b>ISO 4401-05</b>
<b>DSP5K*</b>	<b>CETOP P05</b>
<b>DSP5RK*</b>	<b>ISO 4401-05</b>
<b>DSP7K*</b>	<b>ISO 4401-07</b>
<b>DSP8K*</b>	<b>ISO 4401-08</b>
<b>DSP10K*</b>	<b>ISO 4401-10</b>

**OPERATING PRINCIPLE**

- The direct operated directional valves are available in ISO 4401-03 and ISO 4401-05 size; available pilot operated sizes are: CETOP P05, ISO 4401-05, ISO 4401-07, ISO 4401-08 and ISO 4401-10.
- They are compliant with ATEX, IECEx and INMETRO requirements and are suitable for use in potentially explosive atmospheres, for surface plants or mines.
- A low temperature version (up to -40 °C) is also available.
- DS3K\* and DL5BK\* valves are supplied with a zinc-nickel finishing surface treatment that ensures a salt spray resistance up to 600 h; for DSP\*K\* valves, this treatment is available upon request.
- **Details for classification, operating temperatures and electrical characteristics are in the technical data sheet 02 500 'Explosion proof classification'.**

**PERFORMANCES**

(obtained with mineral oil with viscosity of 36 cSt at 50°C)

		<b>DS3K*</b>	<b>DL5BK*</b>	<b>DSP5K*</b> <b>DSP5RK*</b>	<b>DSP7K*</b>	<b>DSP8K*</b>	<b>DSP10K*</b>
Maximum operating pressure							
P - A - B ports	bar	350	320	320	350	350	350
T port		210	210	see operating limits at paragraph 6			
Maximum flow from P port to A - B - T	l/min	80	125	150	300	600	1100
Operating temperatures (ambient and fluid)	°C	see data sheet 02 500					
Fluid viscosity range	cSt	10 ÷ 400					
Fluid contamination degree		According to ISO 4406:1999 class 20/18/15					
Recommended viscosity	cSt	25					
Mass	kg						
single solenoid valve		1,8	2,7	6,8	8,6	15,5	52
double solenoid valve		2,8	3,8	7,8	9,6	16,5	53

**1 - IDENTIFICATION OF DIRECT OPERATED SOLENOID VALVES**

**1.1 - Identification code**

<b>D</b>			-		/ 10		-	<b>K9</b>		/	
----------	--	--	---	--	------	--	---	-----------	--	---	--

Direct operated solenoid valve

Size: \_\_\_\_\_  
**S3** = ISO 4401-03  
**L5B** = ISO 4401-05

Explosion-proof certification: \_\_\_\_\_  
**See table 1.2**

Spool type (see par. 1.3) \_\_\_\_\_  
**S\***    **TA**    **TB**    **RK**  
**SA\***   **TA02**   **TB02**  
**SB\***   **TA23**   **TB23**

Series No.: \_\_\_\_\_  
 (the overall and mounting dimensions do not change from 10 to 19)

Seals: \_\_\_\_\_  
 For temperature range -20 / +80 °C  
**N** = NBR seals for mineral oil (standard)  
**V** = FPM seals for special fluids  
 For temperature range -40 / +80 °C  
**NL** = seal for low temperatures (for mineral oil)

Option: **/T5**  
 version in T5 temperature class.  
 Omit if not required.

Manual override:  
**CM** = boot protected  
**standard for both N and V seals**  
 not available for NL seals  
**CB** = blind ring nut  
**standard for NL seals**  
 available upon request for both N and V seals  
**CK** = knob manual override  
 (only for DC version)  
**CH** = lever manual override.  
 Not available for DLB5K\*  
 Dimensions for CB and CH at par. 16

Connection type for cable gland  
 upper connection:  
**T01** = M20x1.5 - ISO 261  
**T02** = Gk 1/2 - UNI EN 10226-2  
 not available for INMETRO  
**T03** = 1/2" NPT - ANSI B1.20.1 (ex ANSI B2.1)  
 side connection:  
**S01** = M20x1.5 - ISO 261  
**S02** = Gk 1/2 - UNI EN 10226-2  
 not available for INMETRO  
**S03** = 1/2" NPT - ANSI B1.20.1 (ex ANSI B2.1)  
**S04** = M16x1.5 - ISO 261

Coil electrical connection: by terminal block

Power supply:  
 Direct current (DC)  
**D12** = 12 V  
**D24** = 24 V  
**D48** = 48 V  
**D110** = 110 V  
 Alternate current with built-in  
 rectifier bridge (RAC)  
**R120** = 120 V  
**R240** = 240 V

**NOTE:** the zinc-nickel standard finishing surface treatment is suitable to ensure a salt spray resistance up to 600 h (test operated according to UNI EN ISO 9227 standards and test evaluation operated according to UNI EN ISO 10289 standards)

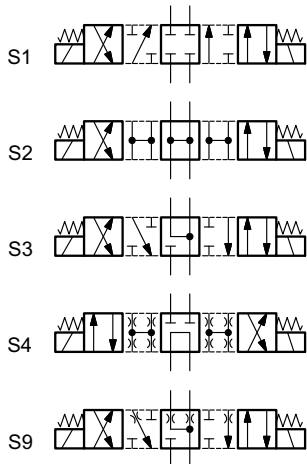
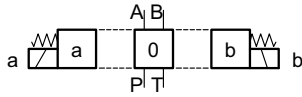
**1.2 - Names of valves per certification**

	ATEX		IECEX		INMETRO	
for gases for dusts	<b>KD2</b>	II 2GD	<b>KXD2</b>	IECEX Gb IECEX Db	<b>KBD2</b>	INMETRO Gb INMETRO Db
for mines	<b>KDM2</b>	I M2	<b>KXDM2</b>	IECEX Mb	<b>KBDM2</b>	INMETRO Mb

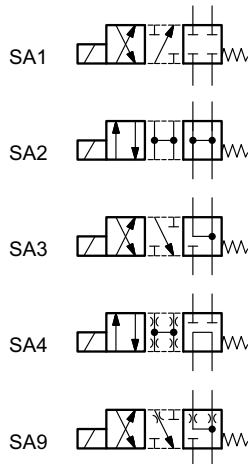
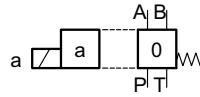
**NOTE:** Refer to the technical data sheet 02 500 for marking, operating temperatures and available versions.

**1.3 - Available spools**

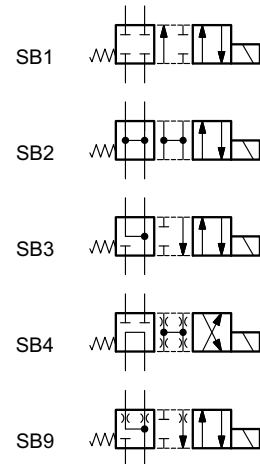
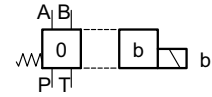
Version **S\***:  
 2 solenoids - 3 positions  
 with spring centering



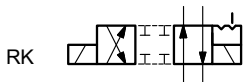
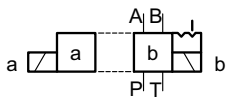
Version **SA\***:  
 1 solenoid side A  
 2 positions (central + external)  
 with spring centering



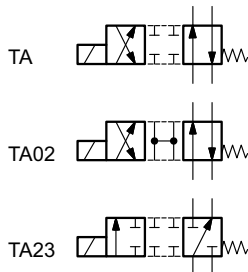
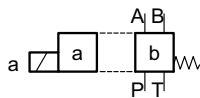
Version **SB\***:  
 1 solenoid side B  
 2 positions (central + external)  
 with spring centering



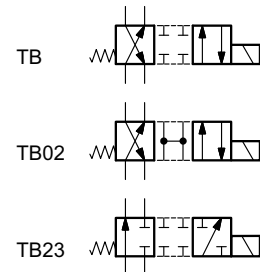
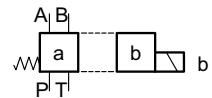
Version **RK**:  
 2 solenoids - 2 positions  
 with mechanical detent



Version **TA**:  
 1 solenoid side A  
 2 external positions  
 with return spring



Version **TB**:  
 1 solenoid side B  
 2 external positions  
 with return spring



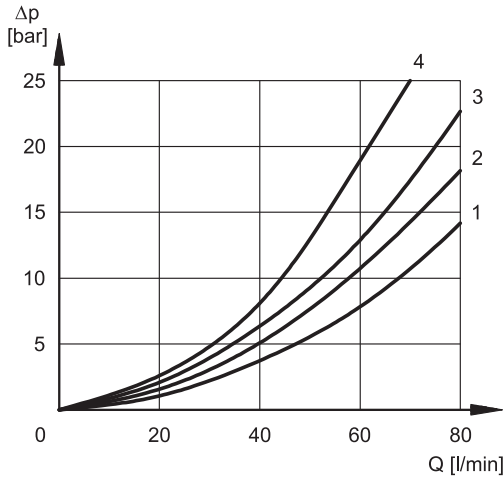
**NOTE:** TA02/TB02  
 spools are not available  
 for RAC solenoid valves.



**2 - CHARACTERISTIC CURVES AND PERFORMANCES OF DIRECT OPERATED SOLENOID VALVES**

**2.1 - Pressure drops  $\Delta p$ -Q**

(values obtained with viscosity 36 cSt at 50 °C)



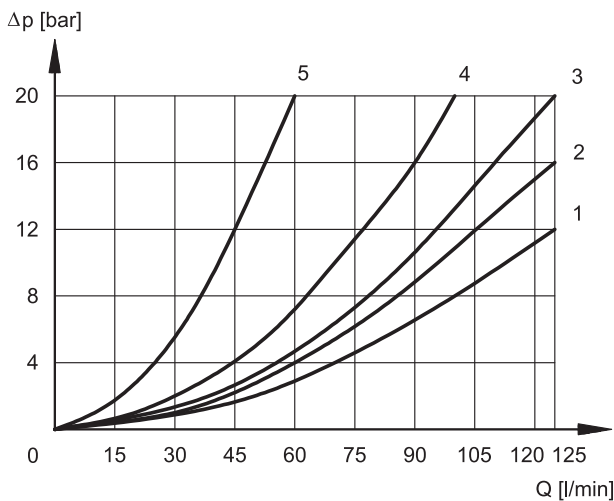
**DS3K\***

**ENERGIZED VALVE**

SPOOL	FLOW DIRECTION			
	P→A	P→B	A→T	B→T
	CURVES ON GRAPH			
S1, SA1, SB2	2	2	3	3
S2, SA2, SB2	1	1	3	3
S3, SA3, SB3	3	3	1	1
S4, SA4, SB4	4	4	4	4
S9, SA9, SB9	2	2	3	3
TA, TB	3	3	3	3
TA02, TB02	2	2	2	2
TA23, TB23	3	3	-	-
RK	2	2	2	2

**DE-ENERGIZED VALVE**

SPOOL	FLOW DIRECTION				
	P→A	P→B	A→T	B→T	P→T
	CURVES ON GRAPH				
S2, SA2, SB2	-	-	-	-	2
S3, SA3, SB3	-	-	3	3	-
S4, SA4, SB4	-	-	-	-	3



**DL5BK\***

**ENERGIZED VALVE**

SPOOL	FLOW DIRECTIONS			
	P→A	P→B	A→T	B→T
	CURVES ON GRAPHS			
S1	1	1	2	2
S2	1	1	1	1
S3	1	1	1	1
S4	4	4	4	4
S9	1	1	1	1
RK	2	2	2	2
TA	2	2	3	3
TA02	2	2	1	1
TA23	3	3	-	-

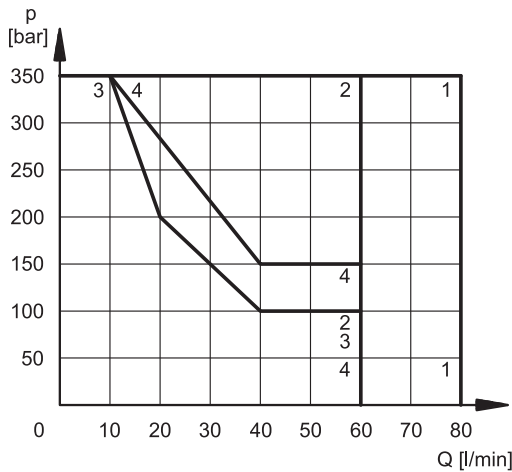
**DE-ENERGIZED VALVE**

SPOOL	FLOW DIRECTIONS		
	A→T	B→T	P→T
	CURVES ON GRAPHS		
S2	-	-	1
S3	5	5	-
S4	-	-	1

### 2.2 - Performance limits

The curves define the flow rate operating fields according to the valve pressure of the different versions. The values have been obtained according to ISO 6403 norm with solenoids at rated temperature and supplied with voltage equal to 90% of the nominal voltage, with mineral oil with viscosity 36 cSt, temperature 50 °C and filtration according to ISO 4406:1999 class 18/16/13.

The operating limits can be considerably reduced if a 4-way valve is used as 3-way valve with port A or B plugged or without flow.

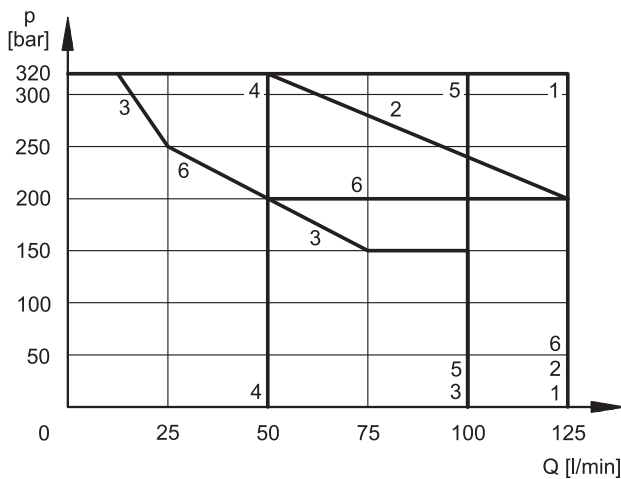

**DS3K\***
**DC SOLENOID VALVE**

SPOOL	CURVE	
	P→A	P→B
S1, SA1, SB1	1	1
S2, SA2, SB2	2	2
S3, SA3, SB3	3	3
S4, SA4, SB4	2	2
S9, SA9, SB9	1	1
TA, TB	1	1
TA02, TB02	4	4
TA23, TB23	4	4
RK	1	1

**RAC SOLENOID VALVE**

SPOOL	CURVE	
	P→A	P→B
S1, SA1, SB1	1	1
S2, SA2, SB2	2	2
S3, SA3, SB3	3	3
S4, SA4, SB4	4	4
S9, SA9, SB9	1	1
TA, TB	1	1
TA02 *, TB02 *	X	X
TA23, TB23	4	4
RK	1	1

\* not available


**DL5BK\***

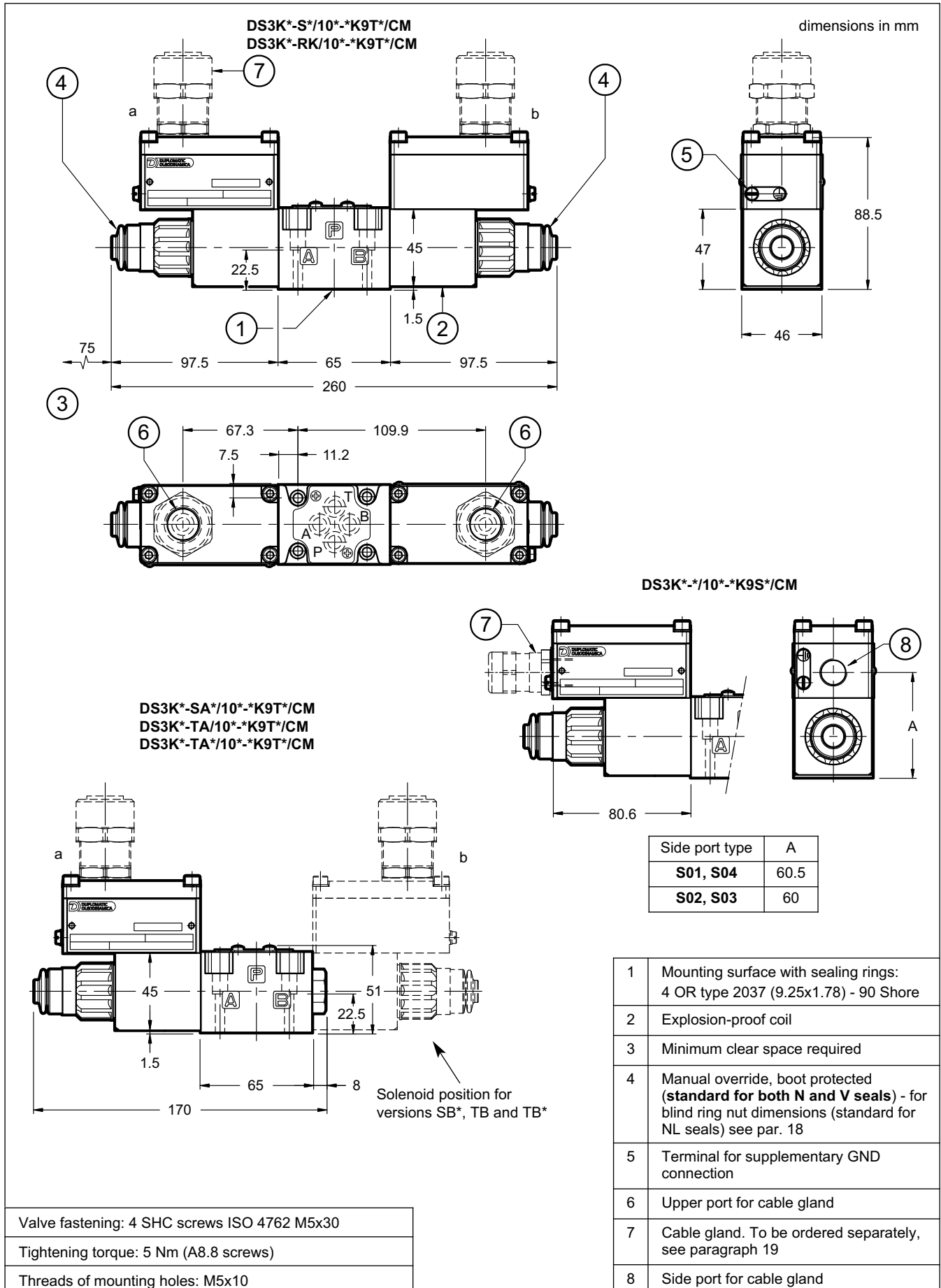
SPOOL	CURVE
S1, S2, RK	1
TA02	2
S3	3
S4	4
TA, TA23	5
S9	6

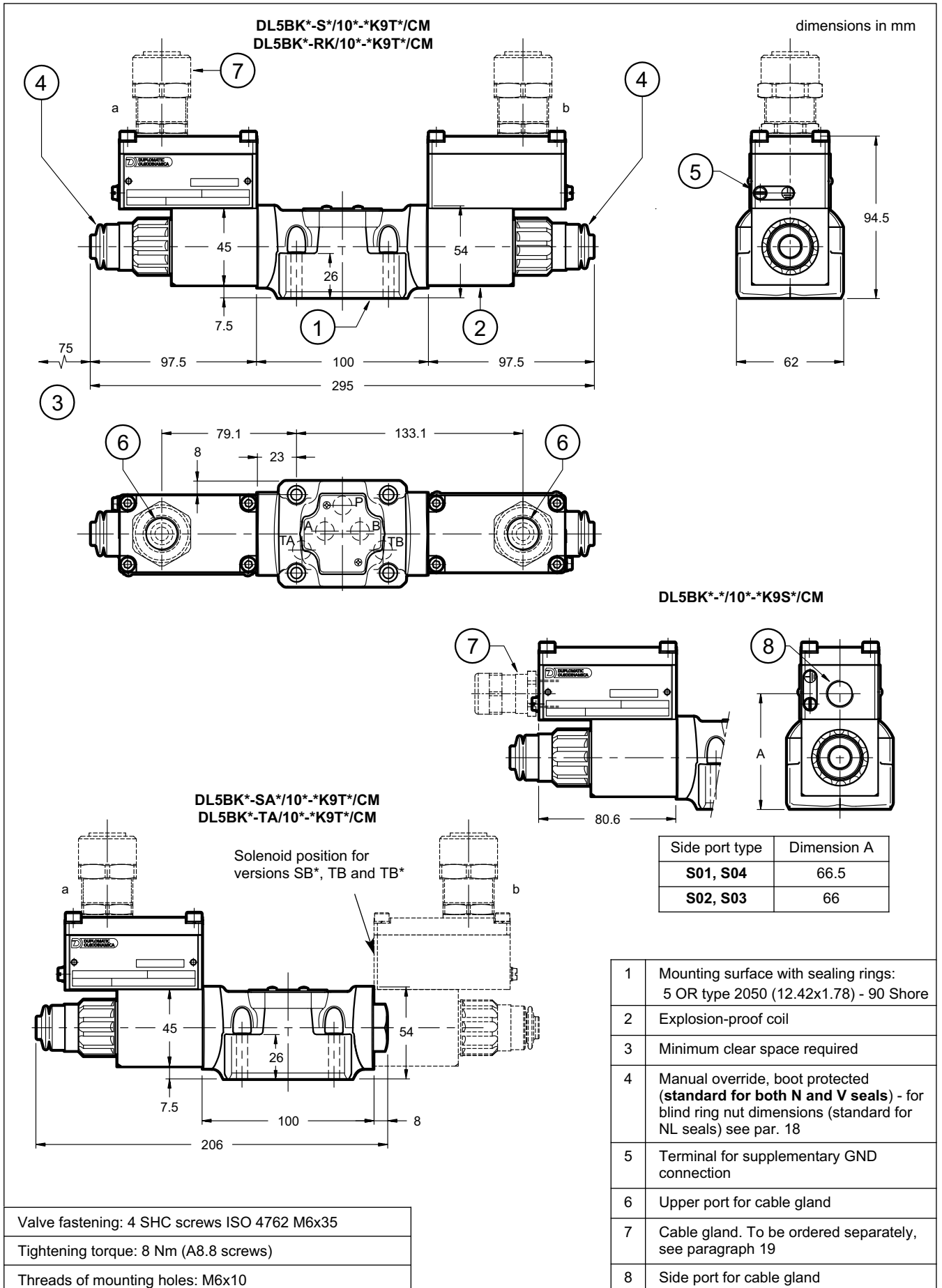
### 2.3 - Switching times

The indicated values are obtained according to ISO 6403 standard, with mineral oil viscosity 36 cSt at 50°C.

TIMES [ms]	DS3K*		DL5BK*	
	ENERGIZING	DE-ENERGIZING	ENERGIZING	DE-ENERGIZING
DC	60	40	70 ÷ 100	15 ÷ 20
RAC	60	140	70 ÷ 100	140

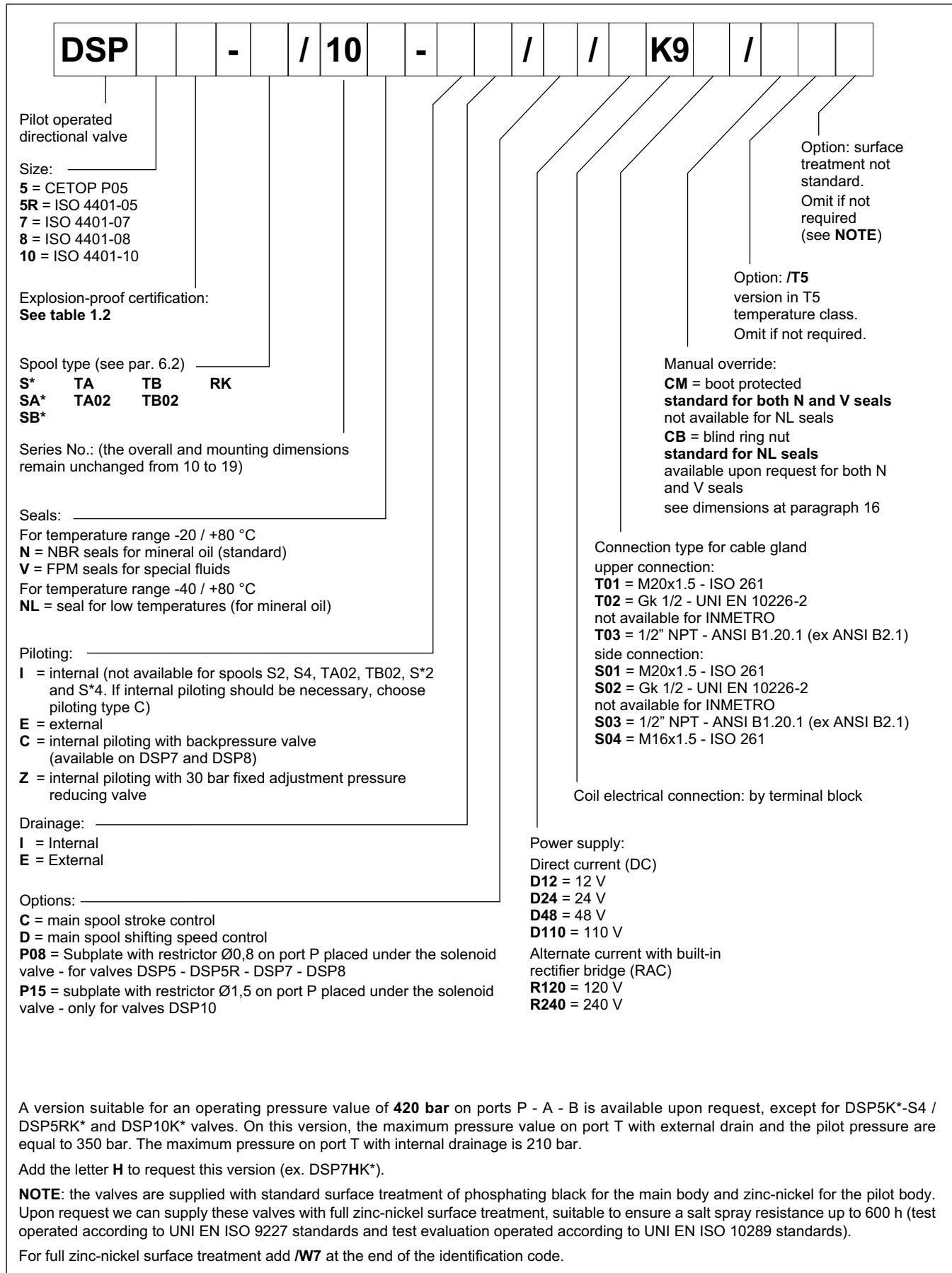
**3 - OVERALL AND MOUNTING DIMENSIONS OF DIRECT OPERATED VALVES**





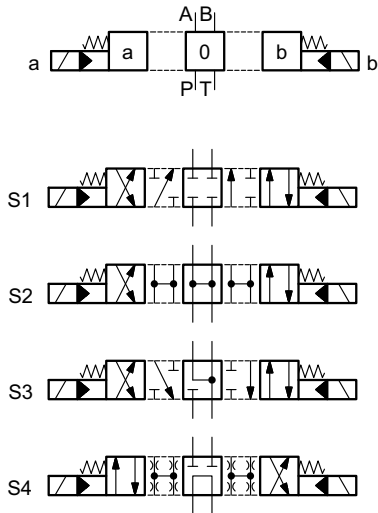
**4 - IDENTIFICATION OF PILOT OPERATED SOLENOID VALVES DSP\*K\***

**4.1 - Identification code**

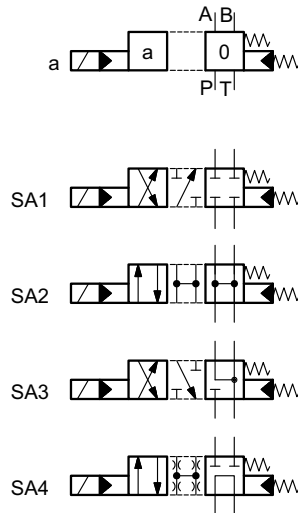


**4.2 - Spool types**

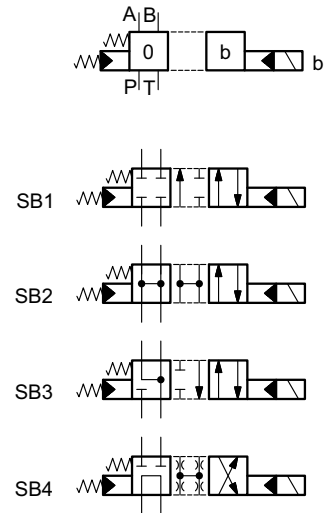
Version **S\***:  
 2 solenoids - 3 positions  
 with spring centering



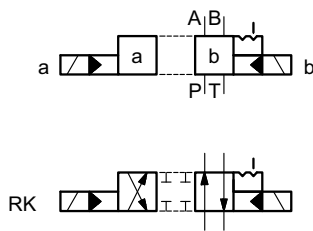
Version **SA\***:  
 1 solenoid side A  
 2 positions (central + external)  
 with spring centering



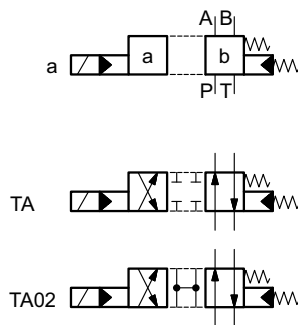
Version **SB\***:  
 1 solenoid side B  
 2 positions (central + external)  
 with spring centering



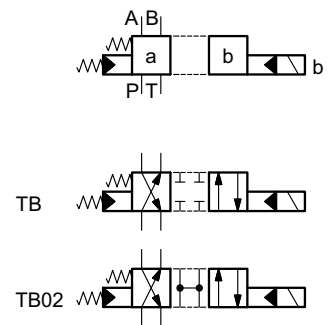
Version **RK**:  
 2 solenoids - 2 positions  
 with mechanical retention



Version **TA**:  
 1 solenoid side A  
 2 external positions  
 with return spring

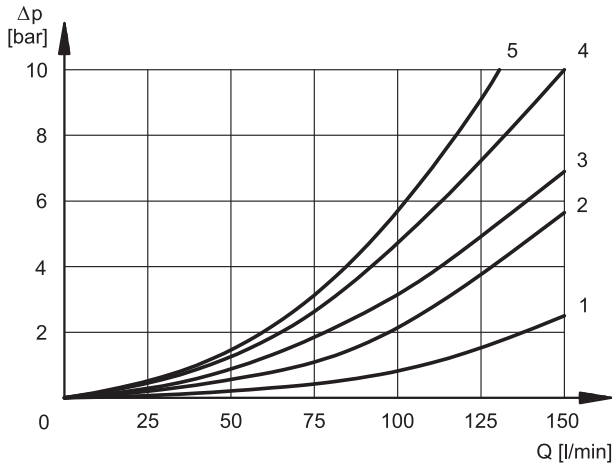


Version **TB**:  
 1 solenoid side B  
 2 external positions  
 with return spring



**5 - CHARACTERISTIC CURVES AND PERFORMANCES OF PILOT OPERATED SOLENOID VALVES**
**5.1 - Pressure drops  $\Delta p$ -Q**

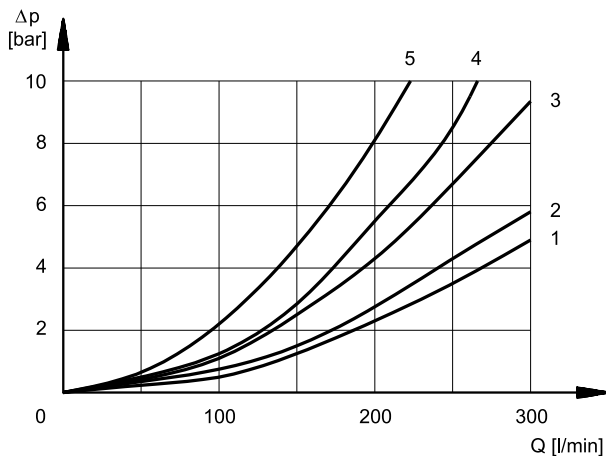
(values obtained with viscosity 36 cSt at 50 °C)

**DSP5K\* - DSP5RK\***

**ENERGIZED POSITION**

SPOOL	FLOW DIRECTION			
	P→A	P→B	A→T	B→T
	CURVES ON GRAPH			
S1, SA1, SB1	4	4	1	1
S2, SA2, SB2	3	3	1	2
S3, SA3, SB3	4	4	1	1
S4, SA4, SB4	5	5	2	3
TA, TB	4	4	1	1
TA02, TB02	3	3	1	1
RK	4	4	1	1

**DE-ENERGIZED POSITION**

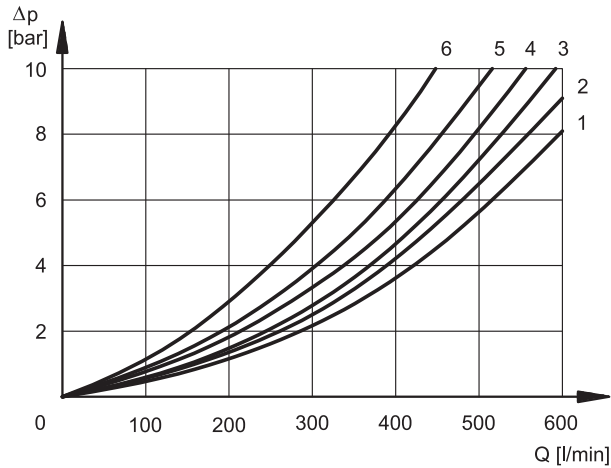
SPOOL	FLOW DIRECTION				
	P→A	P→B	A→T	B→T	P→T
	CURVES ON GRAPH				
S2, SA2, SB2	-	-	-	-	5
S3, SA3, SB3	-	-	4	4	-
S4, SA4, SB4	-	-	-	-	5

**DSP7K\***

**ENERGIZED POSITION**

SPOOL	FLOW DIRECTION			
	P→A	P→B	A→T	B→T
	CURVES ON GRAPH			
S1, SA1, SB1	1	1	3	4
S2, SA2, SB2	1	1	4	4
S3, SA3, SB3	1	1	4	4
S4, SA4, SB4	2	2	4	5
TA, TB	1	1	3	4
TA02, TB02	1	1	4	4
RK	1	1	3	4

**DE-ENERGIZED POSITION**

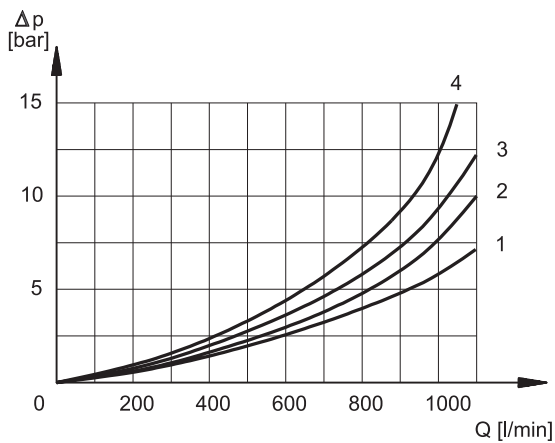
SPOOL	FLOW DIRECTION				
	P→A	P→B	A→T	B→T	P→T
	CURVES ON GRAPH				
S2, SA2, SB2	-	-	-	-	2
S3, SA3, SB3	-	-	4	4	-
S4, SA4, SB4	-	-	-	-	4

**DSP8K\***

**ENERGIZED POSITION**

SPOOL	FLOW DIRECTION			
	P→A	P→B	A→T	B→T
	CURVES ON GRAPH			
S1, SA1, SB1	2	2	3	3
S2, SA2, SB2	1	1	2	1
S3, SA3, SB3	2	2	2	1
S4, SA4, SB4	4	4	3	5
TA, TB	2	2	3	3
TA02, TB02	2	2	3	3
RK	2	2	3	3

**DE-ENERGIZED POSITION**

SPOOL	FLOW DIRECTION				
	P→A	P→B	A→T	B→T	P→T
	CURVES ON GRAPH				
S2, SA2, SB2	-	-	-	-	4
S3, SA3, SB3	-	-	4	4	-
S4, SA4, SB4	-	-	-	-	6

**DSP10K\***

**ENERGIZED POSITION**

SPOOL	FLOW DIRECTION			
	P→A	P→B	A→T	B→T
	CURVES ON GRAPH			
S1, SA1, SB1	1	1	1	1
S2, SA2, SB2	2	2	2	2
S3, SA3, SB3	1	1	4	4
S4, SA4, SB4	2	2	2	2
TA, TB	1	1	1	1
TA02, TB02	1	1	1	1
RK	1	1	1	1

**DE-ENERGIZED POSITION**

SPOOL	FLOW DIRECTION				
	P→A	P→B	A→T	B→T	P→T
	CURVES ON GRAPH				
S2, SA2, SB2	-	-	-	-	3
S3, SA3, SB3	-	-	4	4	-
S4, SA4, SB4	-	-	-	-	4



### 5.2 - Switching times

The values indicated refer to a solenoid valve working with piloting pressure of 100 bar, with mineral oil at a temperature of 50°C, at viscosity of 36 cSt and with PA and BT connections.

The energizing and de-energizing times are obtained at the pressure variation which occurs on the lines.

TIMES ( $\pm 10\%$ ) [ms]	ENERGIZING	DE- ENERGIZING	
	DC - RAC	DC	RAC
DSP5K* - DSP5RK*	70	60	160
DSP7K*	80	70	170
DSP8K*	90	70	170
DSP10K*	120	90	190

## 6 - HYDRAULIC CHARACTERISTICS

PRESSURES (bar)	DSP5K* DSP5RK*	DSP7K*	DSP8K*	DSP10K*
Max pressure in P, A, B ports	320	350	350	350
Max pressure in T line with external drainage	210	250	210	210
Max pressure in T line with internal drainage	210	210	210	210
Max pressure in Y line with external drainage	210	210	210	210
Min piloting pressure <b>NOTE 1</b>	5 ÷ 12			6 ÷ 12
Max piloting pressure <b>NOTE 2</b>	210	210	210	280

**NOTE 1:** minimum piloting pressure can be the lower range value at low flows rates, but with higher flow rates the higher value is needed.

**NOTE 2:** if the valve operates with higher pressures it is necessary to use the version with external pilot and reduced pressure. Otherwise, the valve with internal pilot and pressure reducing valve with 30 bar fixed adjustment can be ordered.

Add the letter **Z** to the identification code to order this option (see par. 4.1). Consider that, by adding the pressure reducing valve, the overall dimensions increase 40 mm in height.

MAXIMUM FLOW RATES		DSP5K* DSP5RK*		DSP7K*		DSP8K*		DSP10K*	
Spool type	[l/min]	PRESSURES							
		at 210 bar	at 320 bar	at 210 bar	at 350 bar	at 210 bar	at 350 bar	at 210 bar	at 350 bar
S4 - SA4 - SB4		120	100	200	150	500	450	750 ( <b>NOTE</b> )	600 ( <b>NOTE</b> )
Other spools		150	120	300	300	600	500	900	700

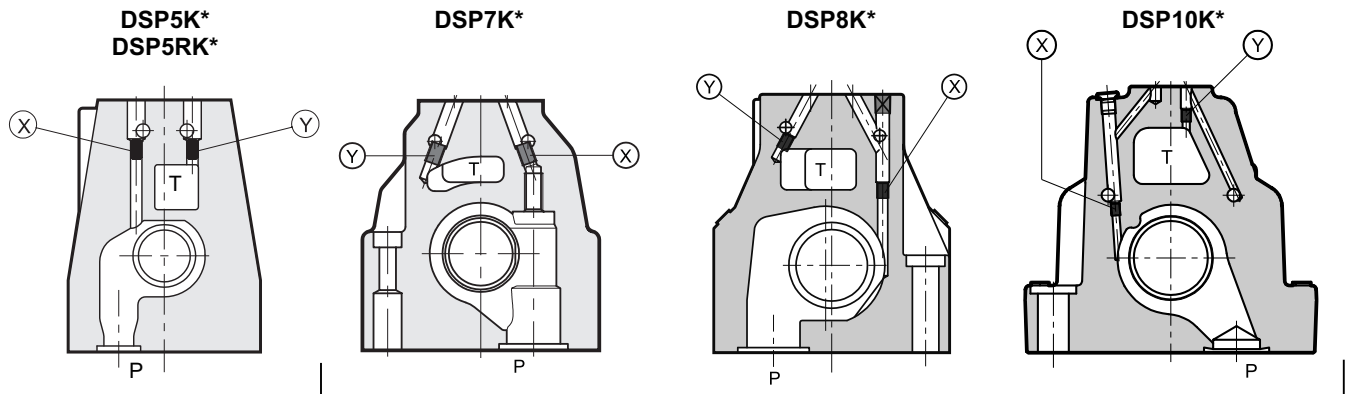
**NOTE:** for the DSP10K\* valve these values are the same even for S2 - SA2 - SB2 spools.

**7 - PILOT AND DRAIN**

DSP\*K\* valves are available with piloting and drainage, both internal and external.

The version with external drainage allows for a higher back pressure on the outlet.

TYPE OF VALVE		Plug assembly	
		X	Y
<b>IE</b>	INTERNAL PILOT AND EXTERNAL DRAIN	NO	YES
<b>II</b>	INTERNAL PILOT AND INTERNAL DRAIN	NO	NO
<b>EE</b>	EXTERNAL PILOT AND EXTERNAL DRAIN	YES	YES
<b>EI</b>	EXTERNAL PILOT AND INTERNAL DRAIN	YES	NO



**X:** plug M5x6 for external pilot  
**Y:** plug M5x6 for external drain

**X:** plug M6x8 for external pilot  
**Y:** plug M6x8 for external drain

**7.1 - Backpressure valve incorporated on line P (C option)**

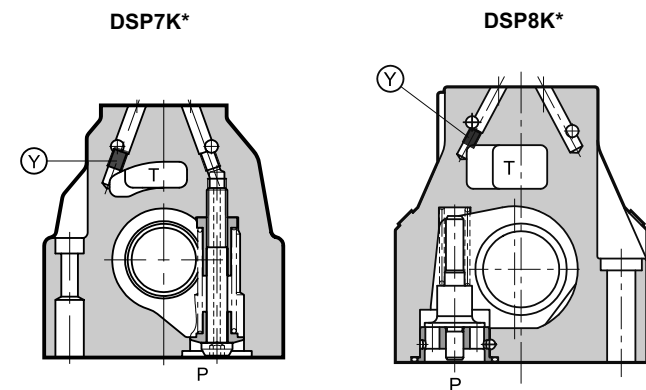
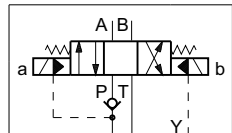
DSP7K\* and DSP8K\* valves are available upon request with backpressure valve incorporated on line P. This is necessary to obtain the piloting pressure when the control valve, in rest position, has the line P connected to the T port (spools S2 - S4 - S\*2 - S\*4 - T\*02). The cracking pressure is of 5 bar with a minimum flow rate of 15 l/min.

**In the C version the piloting is always internal.**

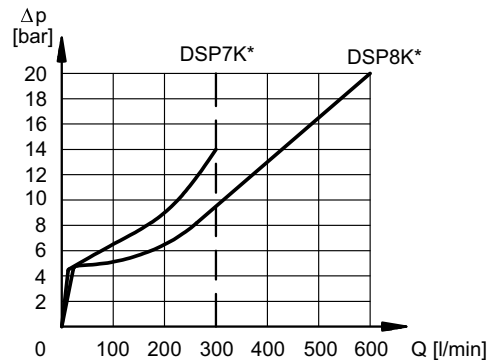
**NOTE:** the backpressure valve can't be used as check valve because it doesn't assure the seal.

Add **C** to the identification code for this request (see paragraph 4.1).

**For DSP7K\* only,** the backpressure valve can be also delivered separately and it can be easily mounted on line P of the main control valve. Ask for code **0266577** to order the backpressure valve.



pilot always internal  
**Y:** plug M6x8 for external drain



The curve refers to the pressure drop (body part only) with backpressure valve energized to which the pressure drop of the reference spool must be added (see paragraph 5).

## 8 - ELECTRICAL CHARACTERISTICS

(values  $\pm$  5%)

Coil type	Nominal voltage [V]	Resistance at 20°C [Ω]	Current consumpt. [A]	Power consumpt. [W]
<b>D12</b>	12	7,2	1,7	20
<b>D24</b>	24	28,7	0,83	20
<b>D48</b>	48	115	0,42	20
<b>D110</b>	110	549	0,2	22

Coil type (NOTE)	Nominal voltage [V]	Freq. [Hz]	Resistance at 20°C [Ω]	Current consumpt. [A]	Power consumpt. [VA]
<b>R120</b>	110V-50Hz 120V-60Hz	50/60	489,6	0,19	21
				0,21	25
<b>R240</b>	230V-50Hz 240V-60Hz	50/60	2067,7	0,098	22,5
				0,1	24

<b>VOLTAGE SUPPLY FLUCTUATION</b> (ripple included)	$\pm$ 10% Vnom
<b>MAX SWITCH ON FREQUENCY</b> DS3K*, DL5BK* DSP5K*, DSP5RK* DSP7K* DSP8K* DSP10K*	8.000 ins/hr 6.000 ins/hr 6.000 ins/hr 4.000 ins/hr 3.000 ins/hr
<b>DUTY CYCLE</b>	100%
<b>ELECTROMAGNETIC COMPATIBILITY (EMC)</b>	According to 2014/30/EU
<b>CLASS OF PROTECTION:</b> Atmospheric agents Coil insulation (VDE 0580)	IP66 / IP68 class H

**NOTE:** type R\* coils are for alternating current supply for both 50 or 60 Hz. For R\* coils the resistance can not be measured in the usual way because of the presence of diodes bridge inside the coil.

### 8.1 - Wiring

In order to realise the electrical connection of the coil, it is necessary to access the terminal block (1) unscrewing the 4 screws (2) that fasten the cover (3) with the box (4) that contains the terminal block.

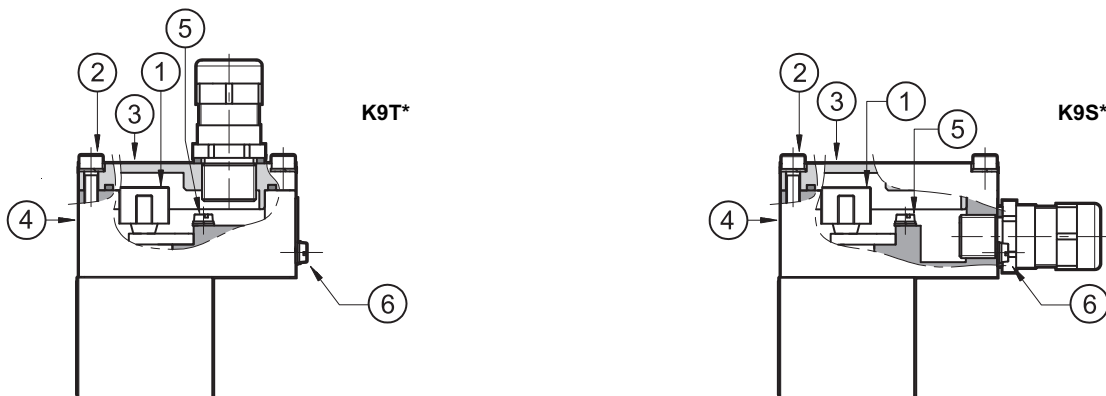
**The electrical connection is polarity-independent.**

By doing electrical connection it is important to connect also the grounding point (5) in the terminal block box (M4 screws), through suitable conductors with the general grounding line of the system.

On the external body of the coil there is a grounding point (6) (M4 screw) that allow to ensure equipotentiality between the valve and the general grounding line of the system; connecting this point the regulation of the EN 13463-1 standard, that impose to verify the equipotentiality of the elements included in a potentially explosive environment (the maximum resistance between the elements must be 100 Ω), is guaranteed.

At the end of the electrical wiring, it is necessary to reassemble the cover (3) on the box (4), checking the correct positioning of the seal located in the cover seat and fastening the 4 M5 screws with a torque of 4.9+6 Nm.

Electrical wiring must be done following in compliance with standards about protection against explosion hazards.



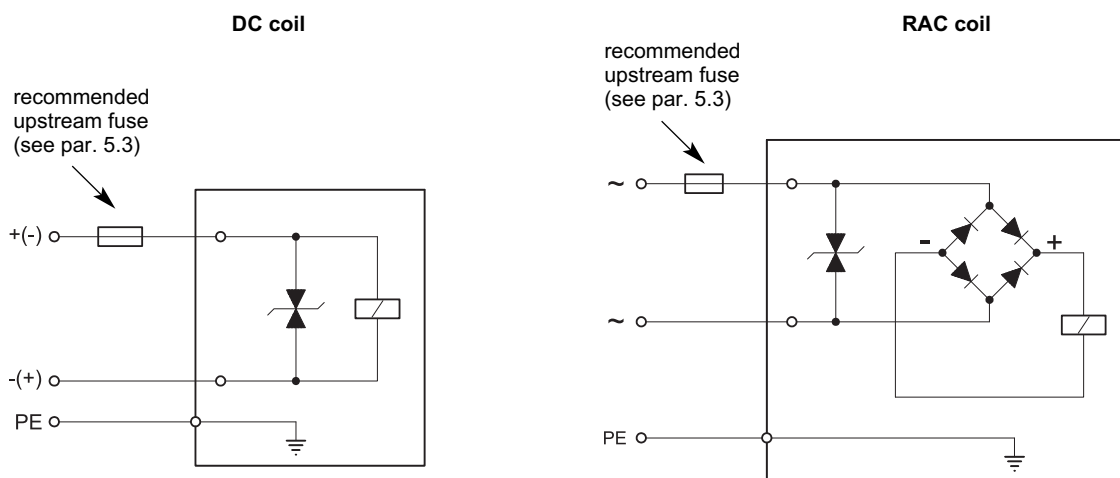
Characteristics of the cables connectable for wiring are indicated in the table below:

Function	Cable section
Operating voltage cables connection	max 2.5 mm <sup>2</sup>
Connection for internal grounding point	max 2.5 mm <sup>2</sup>
Connection for external equipotential grounding point	max 6 mm <sup>2</sup>

Cables for wiring must be non-armoured cables, with external covering sheath and must be suitable for use in environments with temperatures from - 20 °C to +110 °C (for valves either with N or V seals) or from - 40 °C to +110 °C (for valves with NL seals).

Cable glands (which must be ordered separately, see paragraph 19) allow to use cables with external diameter between 8 and 10 mm.

### 8.2 - Electrical diagrams



### 8.3 - Overcurrent fuse and switch-off voltage peak

Upstream of each valve, an appropriate fuse (max 3 x I<sub>n</sub> according to IEC 60127) or a protective motor switch with short-circuit and thermal instantaneous tripping, as short-circuit protection, must be connected. The cut-off power of the fuse must correspond or exceed the short circuit current of the supply source. The fuse or the protective motor must be placed outside the dangerous area or they must be protected with an explosion-proof covering.

In order to safeguard the electronic device to which the valve is connected, there is a protection circuit in the coil, that reduces voltage peaks, which can occur when inductances are switched off.

The table shows the type of fuse recommended according to the nominal voltage of the valve and to the value of the voltage peaks reduction.

Coil type	Nominal voltage [V]	Rated current [A]	Recommended pre-fuse characteristics medium time-lag according to DIN 41571 [A]	Maximum voltage value upon switch off [V]	Suppressor circuit
<b>D12</b>	12	1,7	2,5	- 49	Transient voltage suppressor bidirectional
<b>D24</b>	24	0,83	1,25	- 49	
<b>D48</b>	48	0,42	0,6	- 81	
<b>D110</b>	110	0,2	0,3	- 309	
<b>R120</b>	120	0,21	0,3	- 3	
<b>R240</b>	240	0,1	0,15	- 3	

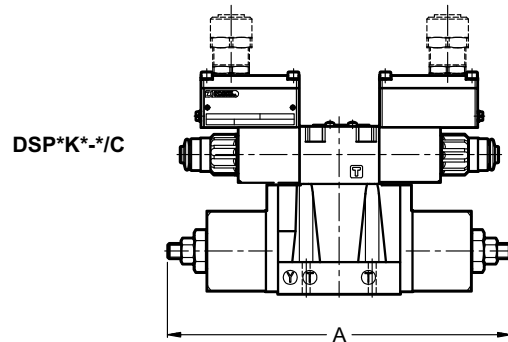
## 9 - OPTIONS

### 9.1 - Control of the main spool stroke: C

With the help of special side plugs, it is possible to introduce stroke controls in the heads of the piloted valve so as to vary the maximum spool clearance opening.

This solution allows control of the flow rate from the pump to the actuator and from the actuator to the outlet, obtaining a double adjustable control on the actuator.

Add the letter **C** to the identification code to request this device (see paragraph 4.1).



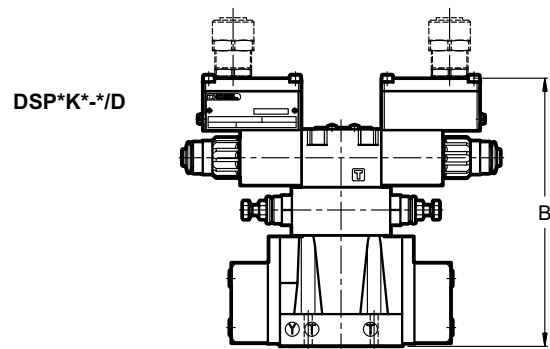
dimensions in mm

	DSP5K* DSP5RK*	DSP7K*	DSP8K*	DSP10K*
A	280	319	401.5	520

### 9.2 - Control of the main spool shifting speed: D

By placing a MERS type double flow control valve between the pilot solenoid valve and the main distributor, the piloted flow rate can be controlled and therefore the changeover smoothness can be varied.

Add the letter **D** to the identification code to request this device (see paragraph 4.1).



dimensions in mm

	DSP5K* DSP5RK*	DSP7K*	DSP8K*	DSP10K*
B	218.5	225.5	254.5	310.5

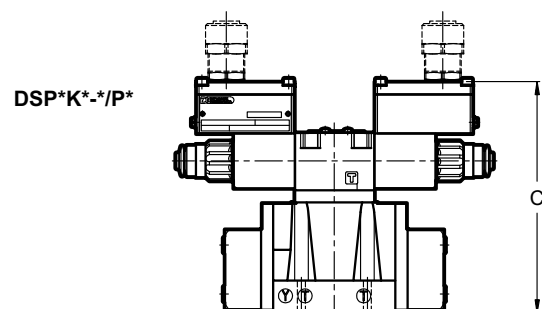
### 9.3 - Subplate with throttle on line P

It is possible to introduce a subplate with a restrictor on line P between the pilot solenoid valve and the main distributor.

restrictor Ø0.8 for DSP5K\*, DSP5RK\*, DSP7K\* e DSP8K\*  
 restrictor Ø1.5 for DSP10K\*:

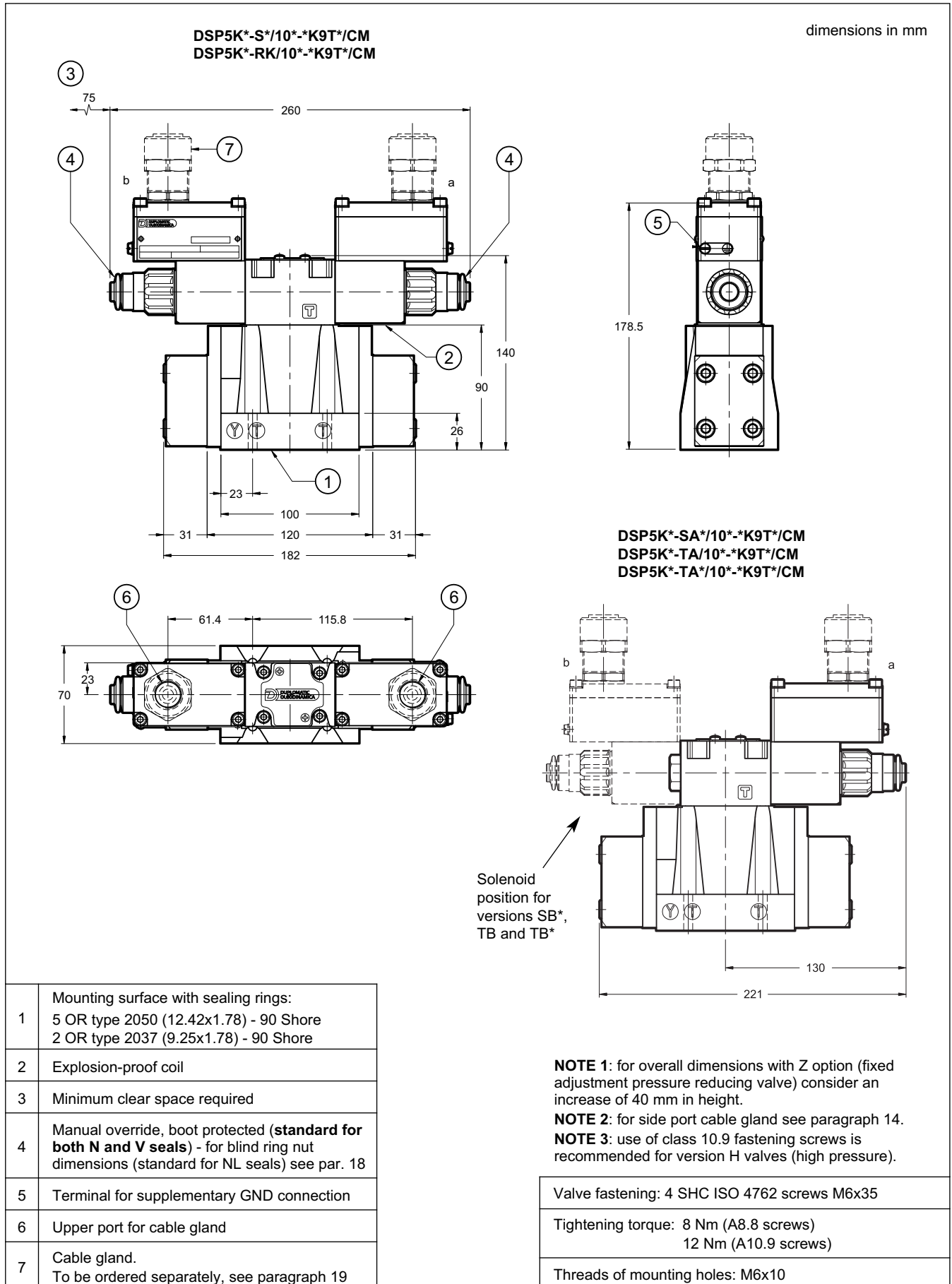
To request include in the code (par. 4.1):

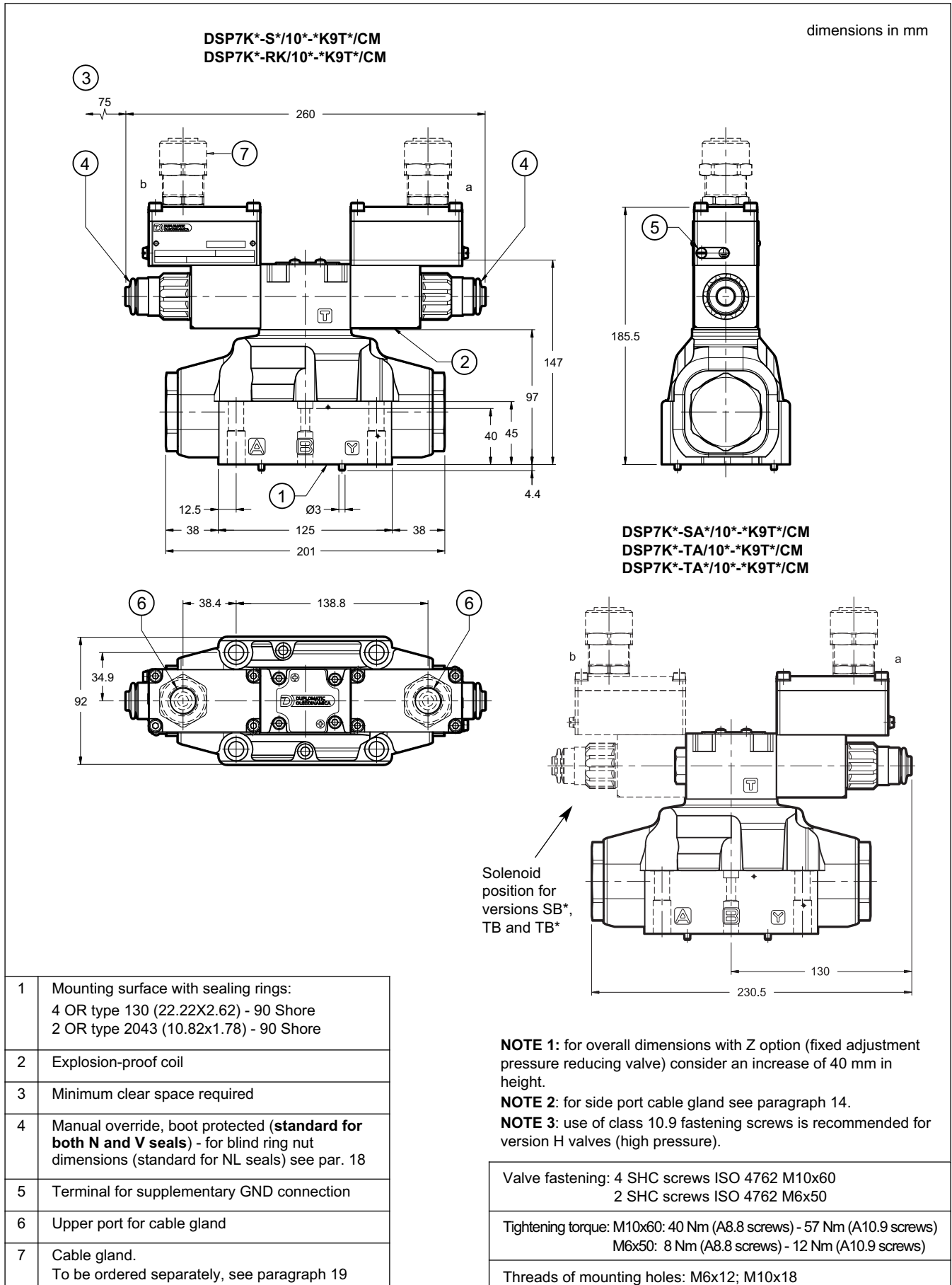
**P08** for DSP5K\*, DSP5RK\*, DSP7K\* and DSP8K\*  
**P15** for DSP10K\*



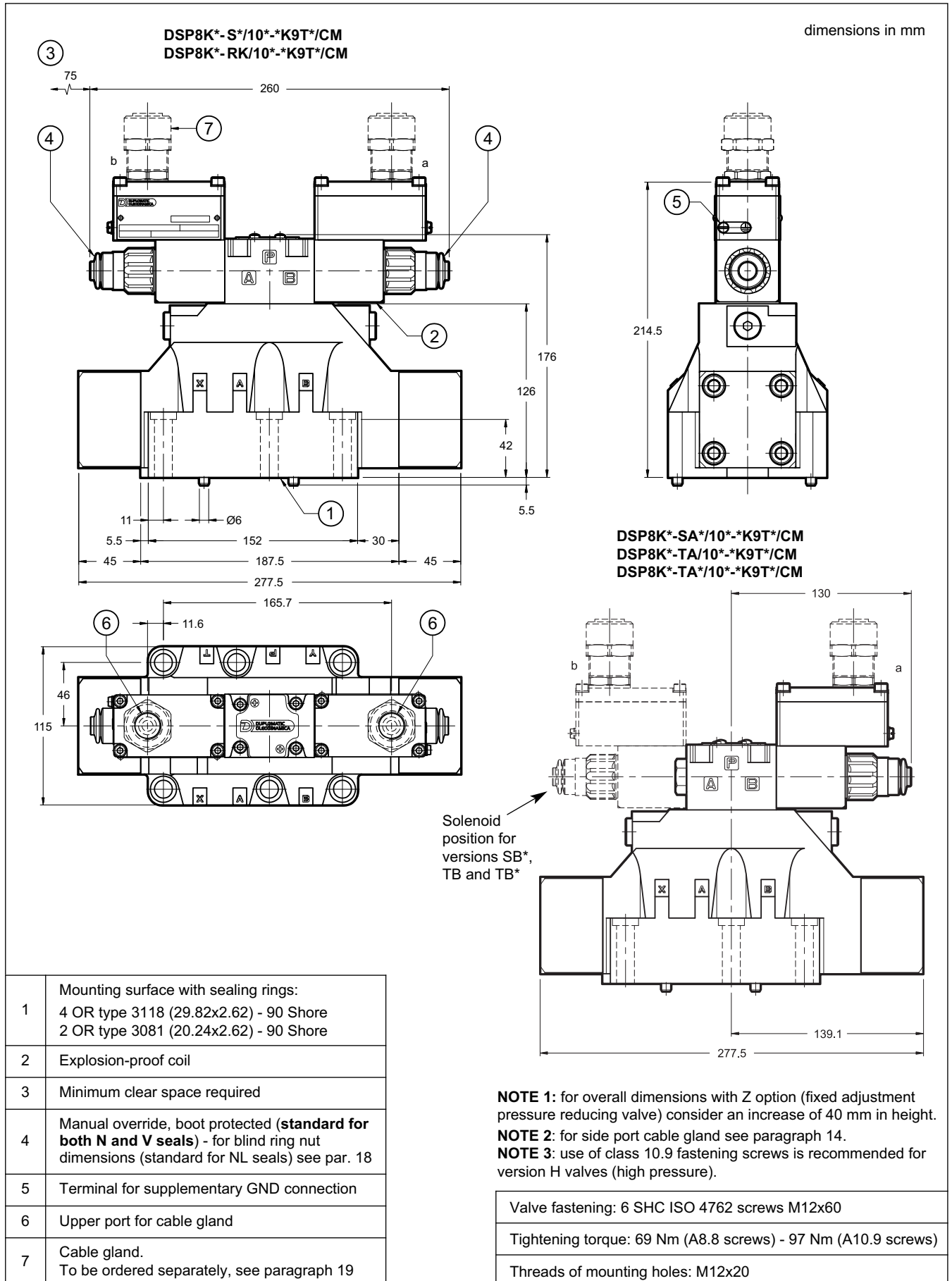
dimensions in mm

	DSP5K* DSP5RK*	DSP7K*	DSP8K*	DSP10K*
C	188.5	195.5	224.5	280.5

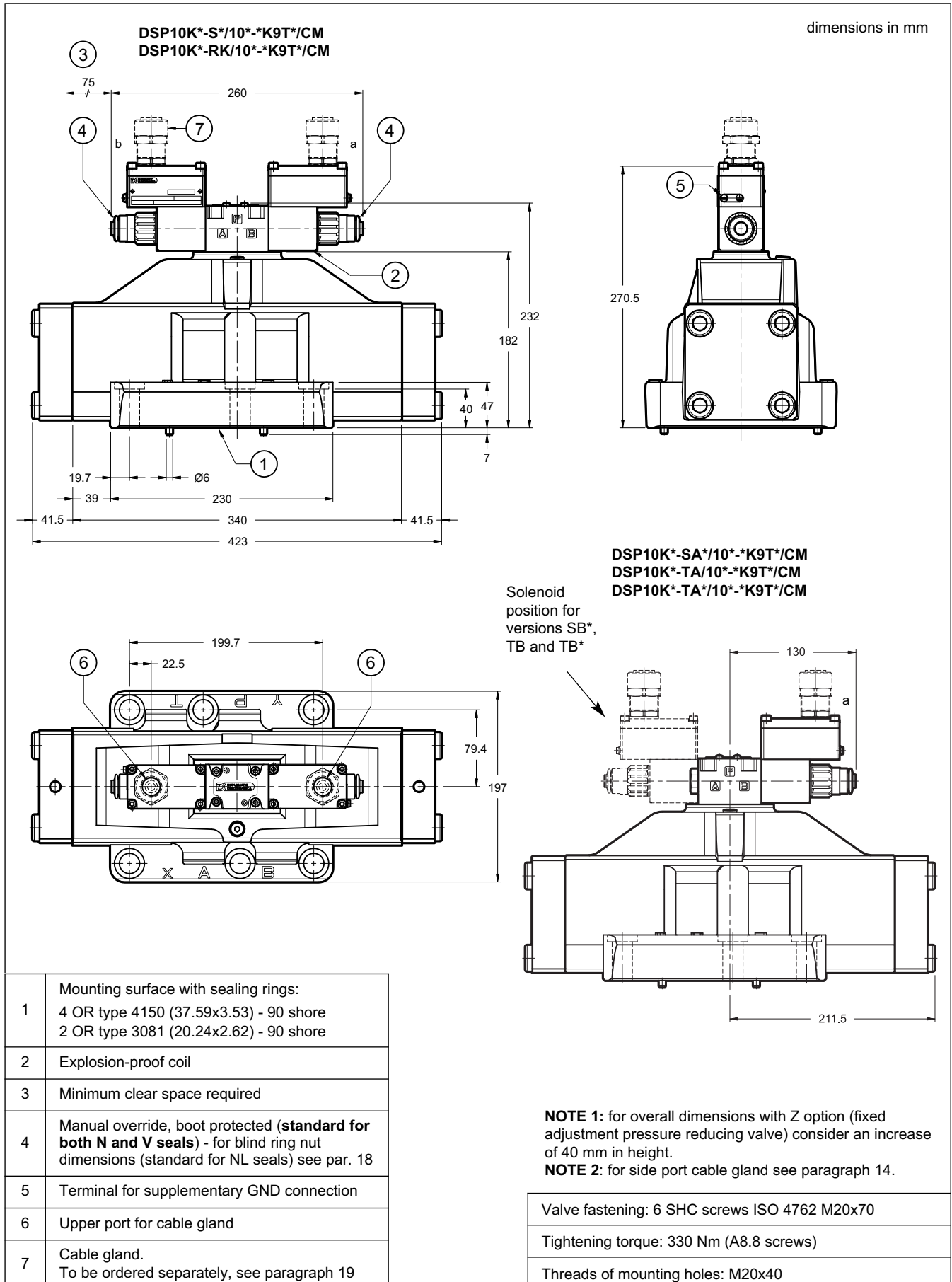
**10 - DSP5K\* AND DSP5RK\* OVERALL AND MOUNTING DIMENSIONS**


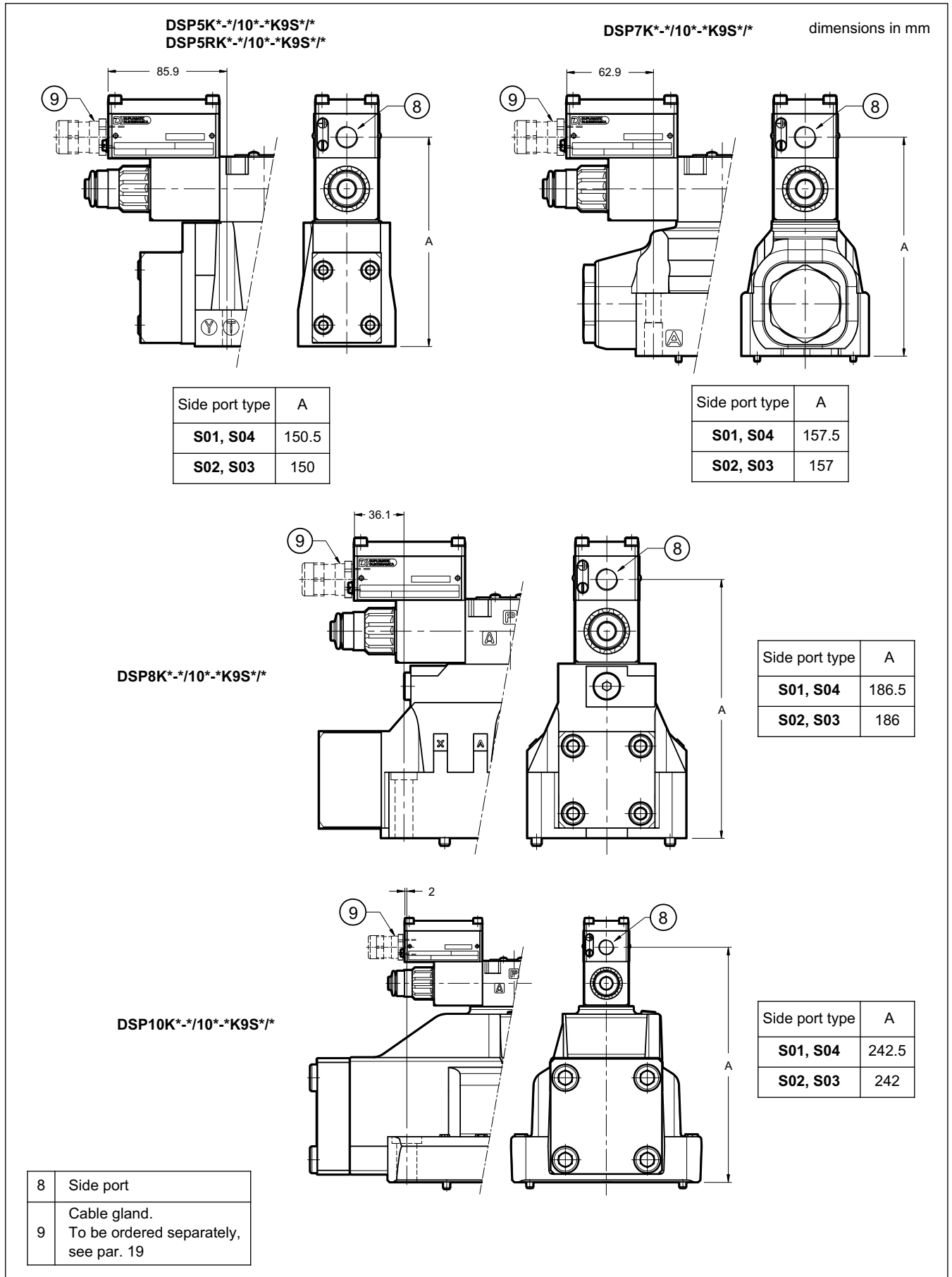
**11 - DSP7K\* OVERALL AND MOUNTING DIMENSIONS**


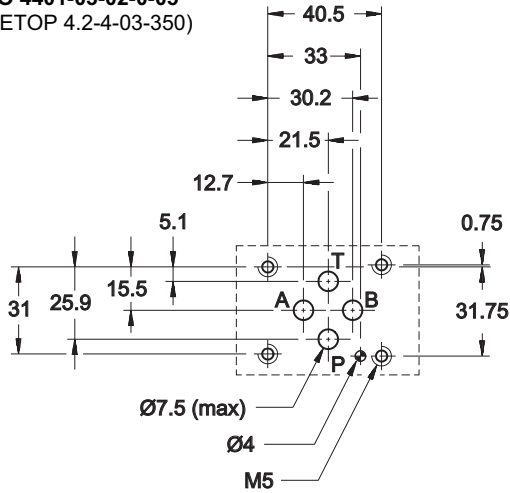
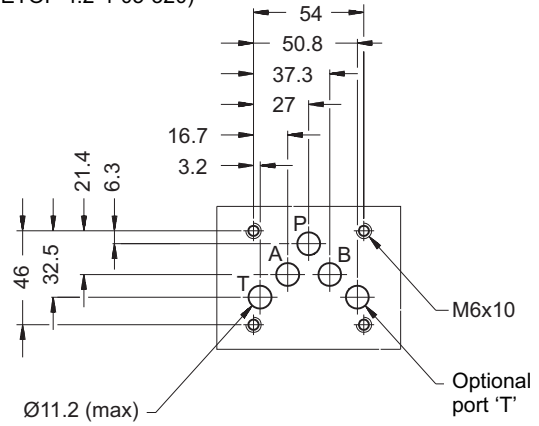
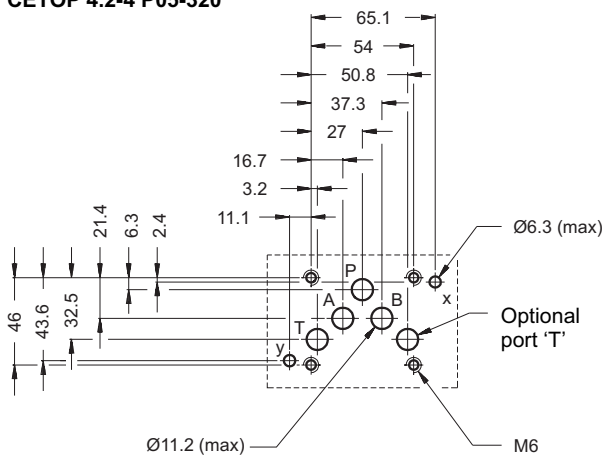
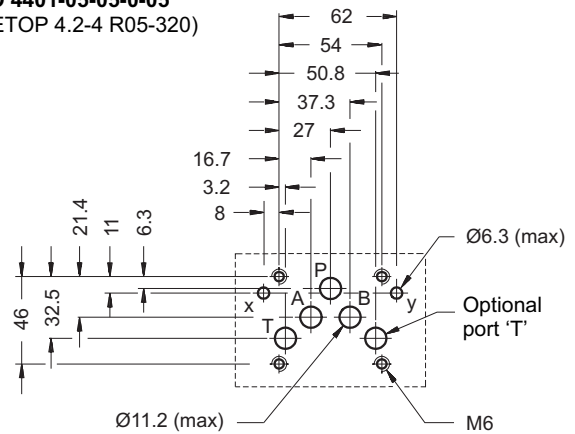
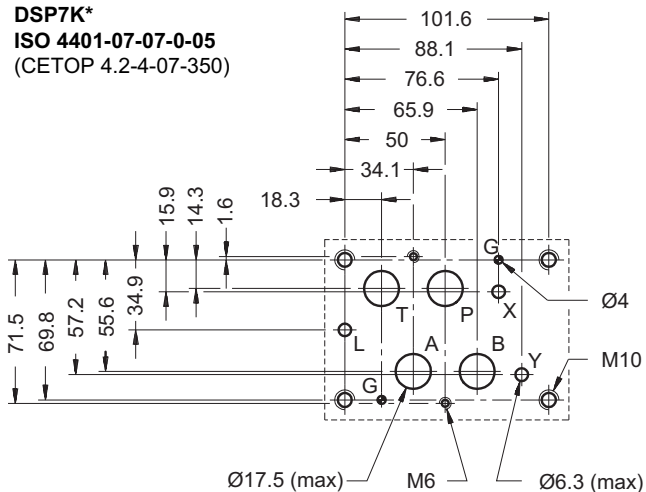
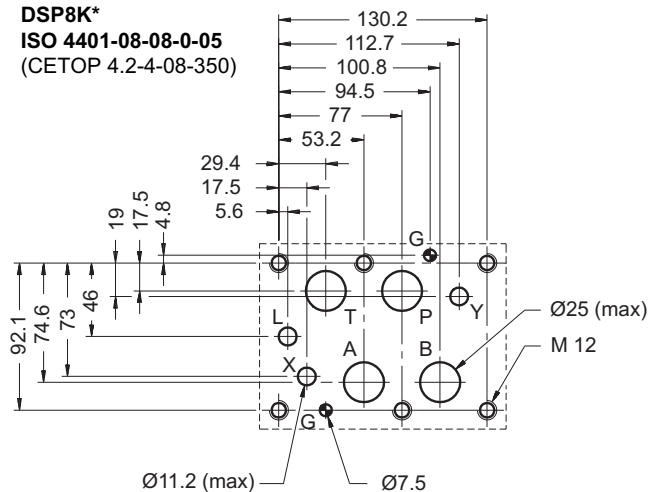
**12 - DSP8K\* OVERALL AND MOUNTING DIMENSIONS**



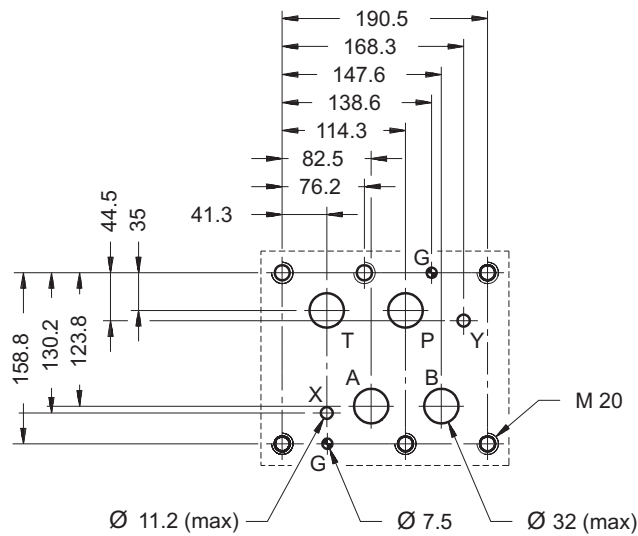
**13 - DSP10K\* OVERALL AND MOUNTING DIMENSIONS**



**14 - OVERALL AND MOUNTING DIMENSIONS OF DSP\*K\* WITH SIDE CONNECTION**


**15 - MOUNTING SURFACES**
**DS3K\***  
**ISO 4401-03-02-0-05**  
**(CETOP 4.2-4-03-350)**

**DL5BK\***  
**ISO 4401-05-04-0-05**  
**(CETOP 4.2-4-05-320)**

**DSP5K\***  
**CETOP 4.2-4 P05-320**

**DSP5RK\***  
**ISO 4401-05-05-0-05**  
**(CETOP 4.2-4 R05-320)**

**DSP7K\***  
**ISO 4401-07-07-0-05**  
**(CETOP 4.2-4-07-350)**

**DSP8K\***  
**ISO 4401-08-08-0-05**  
**(CETOP 4.2-4-08-350)**


**DSP10K\***  
**ISO 4401-10-09-0-05**  
 (CETOP 4.2-4-10-350)



## 16 - HYDRAULIC FLUIDS

Use mineral oil-based hydraulic fluids HL or HM type, according to ISO 6743-4. For these fluids, use NBR seals (code N). For fluids HFDR type (phosphate esters) use FPM seals (code V). For the use of other fluid types such as HFA, HFB, HFC, please consult our technical department.

Using fluids at temperatures higher than 80 °C causes a faster degradation of the fluid and of the seals characteristics. The fluid must be preserved in its physical and chemical characteristics.

## 17 - INSTALLATION

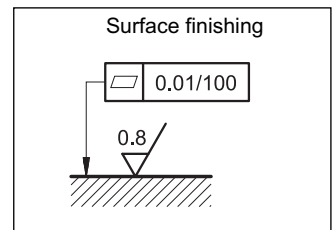


**Installation must adhere to instructions reported in the *Use and Maintenance manual*, always attached to the valve. Unauthorized interventions can be harmful to people and goods because of the explosion hazards present in potentially explosive atmospheres.**

Configurations with centering and recall springs can be mounted in any position; The RK versions, without springs and with mechanical detent, must be mounted with the longitudinal axis horizontal.

Valve fastening takes place by means of screws or tie rods, laying the valve on a lapped surface, with values of planarity and smoothness that are equal to or better than those indicated in the drawing.

If the minimum values of planarity or smoothness are not met, fluid leakages between valve and mounting surface can easily occur.



**18 - MANUAL OVERRIDES**

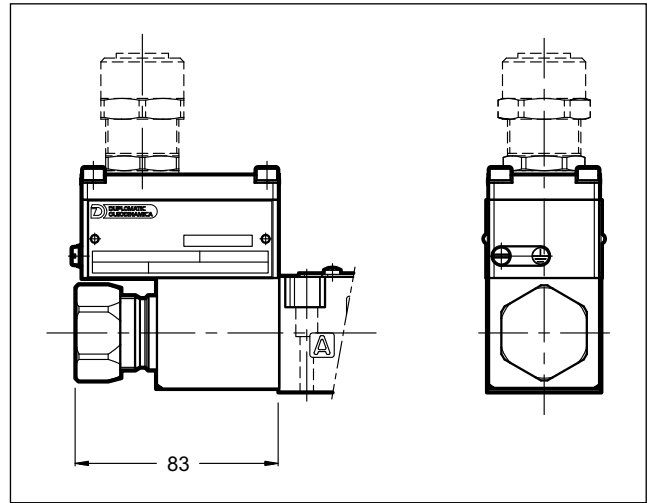
**18.1 - CB - Blind ring nut**

The metal ring nut protects the solenoid tube from atmospheric agents and isolates the manual override from accidental operations. The ring nut is tightened on a threaded fastener that keeps the coil in its position even without the ring nut.

To access the manual override loosen the ring nut and remove it; then reassemble hand tightening, until it stops.

**Activate the manual override always and only with non-sparking tools suitable for use in potentially explosive atmospheres.**

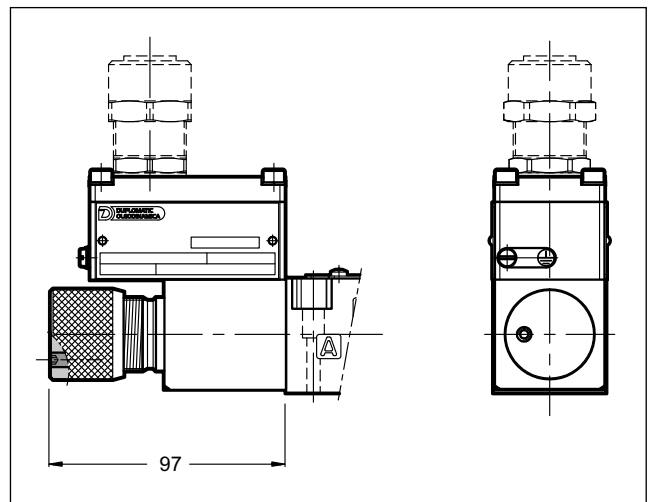
More information on safe use of explosion-proof components are provided in the instruction manual, always supplied with the valve.



**18.2 - CK - Knob manual override**

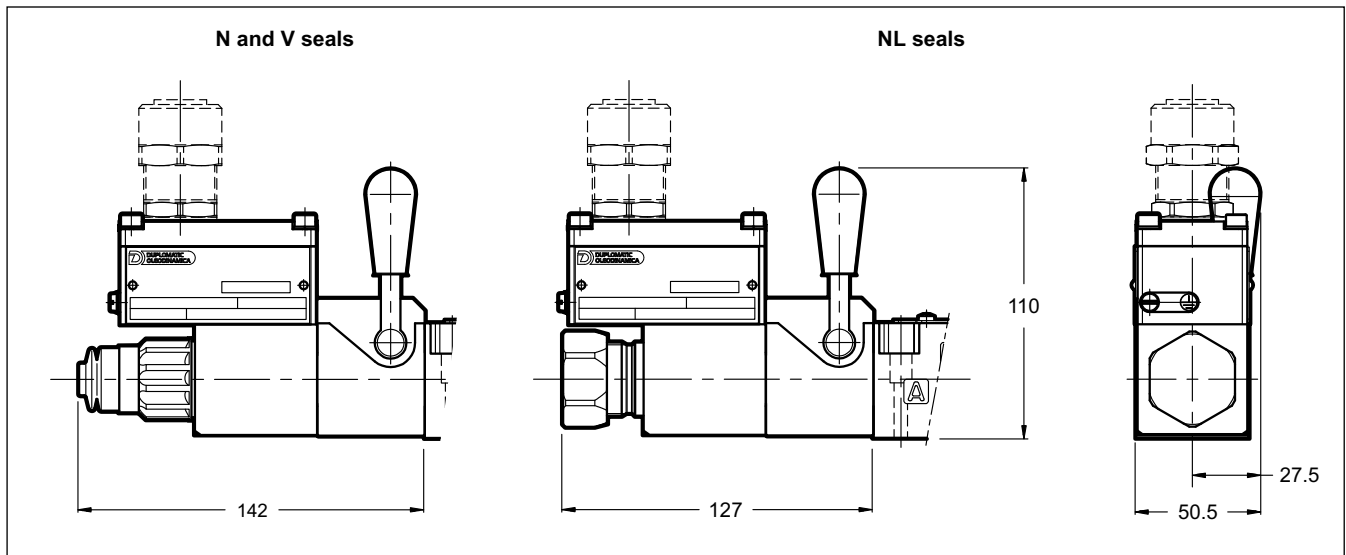
When the set screw is screwed and its point is aligned with the edge of the knob, tighten the knob till it touches the spool: in this position the override is not engaged and the valve is de-energized. After adjusting the override, tighten the set screw in order to avoid the knob losing.

Spanner: 3 mm



**18.3 - CH - Lever manual override**

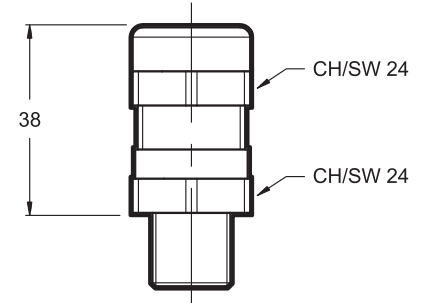
The lever manual override is available for DSE3K only. The seals choice leads the type of the standard ring nut to be mounted. The lever device is always placed at side A.



## 19 - CABLE GLANDS

Cable glands must be ordered separately; Duplomatic offers some types of cable glands with the following features:

- version for non-armoured cable, external seal on the cable (suitable for Ø8+10 mm cables);
- ATEX II 2GD, I M2; IECEx Gb, Db, Mb; INMETRO Gb, Db, Mb certified
- cable gland material: nickel brass
- rubber tip material: silicone
- ambient temperature range: - 70 °C + + 220 °C
- protection degree: IP66/IP68
- tightening torque: 15 Nm



To order, list the description and the code of the version chosen from among those listed below:

**Description: CGK2/NB-01/10**

**Code: 3908108001**

M20x1.5 - ISO 261 male thread, suitable for coils with T01 and S01 connections. It is supplied equipped with silicone seal, that must be assembled between the cable gland and the coil, so as to ensure IP66/IP68 protection degree.

**Description: CGK2/NB-03/10**

**Code: 3908108003**

1/2" NPT - ANSI B1.20.1 (ex ANSI B2.1), suitable for coils with T03 and S03 connections. The customer must apply LOCTITE® 243™ threadlocker or similar between the cable gland connection thread and the coil in order to ensure IP66/IP68 protection degree.

**Description: CGK2/NB-02/10**

**Code: 3908108002**

Gk 1/2 - UNI EN 10226-2 male thread, suitable for coils with T02 and S02 connections. The customer must apply LOCTITE® 243™ threadlocker or similar between the cable gland connection thread and the coil in order to ensure IP66/IP68 protection degree.

**Description: CGK2/NB-04/10**

**Code: 3908108004**

M16x1.5 - ISO 261 male thread, suitable for coils with S04 connection. It is supplied equipped with silicone seal, that must be assembled between the cable gland and the coil, so as to ensure IP66/IP68 protection degree.

## 20 - SUBPLATES

(see catalogue 51 000)

	DS3K*	DL5BK*		DSP5K*	DSP7K*	DSP8K*
Type with rear ports	PMMD-AI3G	PMD4-AI4G	-	PME4-AI5G	PME07-AI6G	-
Type with side ports	PMMD-AL3G	-	PMD4-AL4G	PME4-AL5G	PME07-AL6G	PME5-AL8G
P, T, A, B ports dimensions	3/8" BSP	3/4" BSP	1/2" BSP	3/4" BSP	1" BSP	1 1/2" BSP
X, Y ports dimensions	-	-	-	1/4" BSP	1/4" BSP	1/4" BSP

**NOTE:** Subplates (to be ordered separately) do not contain neither aluminium nor magnesium at a higher rate than the value allowed by norms according to ATEX directive for categories II 2GD and I M2.

The user must take care and make a complete assessment of the ignition risk, that can occur from the relative use in potentially explosive environments.



**D\*K\***  
**SERIES 10**



**DIPLOMATiC OLEODiNAMiCA S.p.A.**  
20015 PARABIAGO (MI) • Via M. Re Depaolini 24  
Tel. +39 0331.895.111  
Fax +39 0331.895.339  
[www.diplomatic.com](http://www.diplomatic.com) • e-mail: [sales.exp@diplomatic.com](mailto:sales.exp@diplomatic.com)



# EXPLOSION-PROOF CLASSIFICATION

## for

### SOLENOID AND PROPORTIONAL VALVES

ref. catalogues:

#### pressure valves

<b>RQM*K*-P</b>	<b>21 515</b>
<b>PRE(D)*K*</b>	<b>81 315</b>
<b>ZDE3K*</b>	<b>81 515</b>
<b>DZCE*K*</b>	<b>81 605</b>

#### directional valves

<b>D*K*</b>	<b>41 515</b>
<b>DS(P)E*K*</b>	<b>83 510</b>

#### GENERAL INFO

This informative technical datasheet displays information about **classification and marking** of Diplomatic explosion-proof valves range.

Diplomatic offers valves with the following certifications:

<b>ATEX</b>	<b>II 2G</b>	<b>II 2D</b>	<b>I M2</b>
<b>IECEX</b>	<b>Gb</b>	<b>Db</b>	<b>Mb</b>
<b>INMETRO</b>	<b>Gb</b>	<b>Db</b>	<b>Mb</b>

Instructions for use and maintenance can be found in the related manuals, always supplied together with valves.



## 1 - ATEX CLASSIFICATION AND TEMPERATURES

Diplomatic certificates the combination valve-coil for the valves suitable for application and installation in potentially explosive atmospheres, according to ATEX directive; the supply always includes the declaration of conformity to the directive and the operating and maintenance manual, that contains all the information needed for a correct use of the valve in potentially explosive environments.

Coils assembled on these valves have been separately certified according to ATEX directive and so they are suitable for use in potentially explosive atmospheres.

### 1.1 - ATEX classification for valves

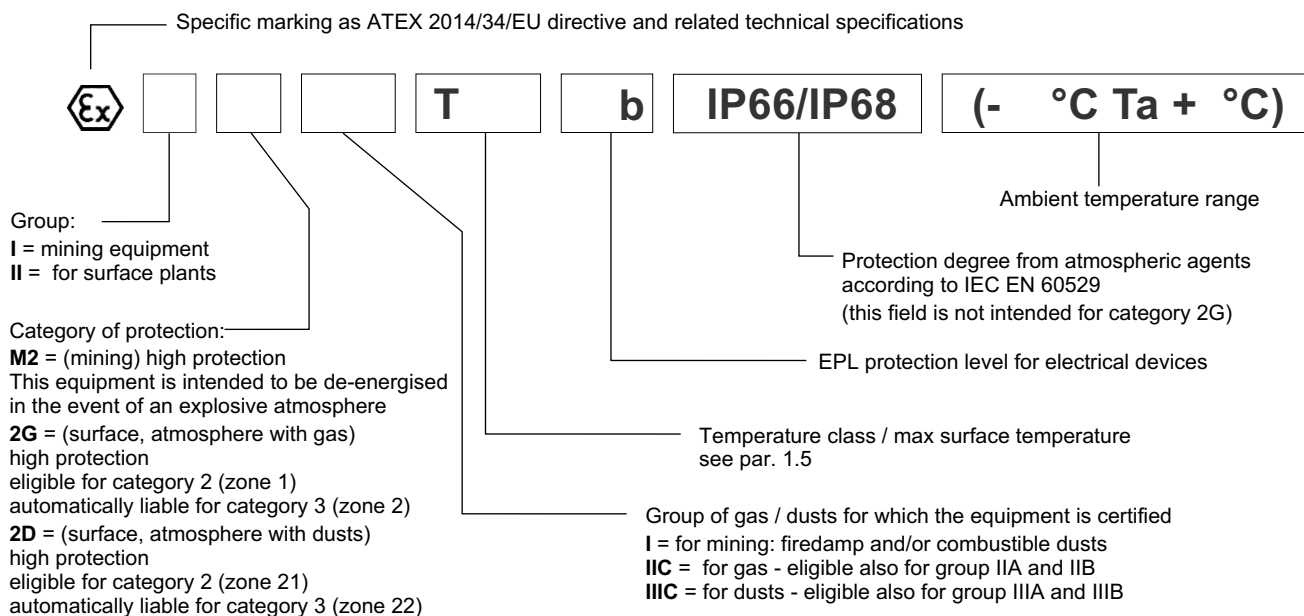
Type examination certificate: CEC 13 ATEX 030-REV.2

The valves are suitable for applications and installations in potentially explosive atmospheres that fall within:

ATEX II 2G ATEX II 2D	<b>*KD2</b>	equipment intended for use in areas in which explosive atmospheres caused by gases, vapours, mists or air/dust mixtures are likely to occur occasionally.
ATEX I M2	<b>*KDM2</b>	equipment intended for use in underground parts of mines as well as those parts of surface installations of such mines likely to be endangered by firedamp and/or combustible dust. This equipment is intended to be de-energised in the event of an explosive atmosphere.

### 1.2 - ATEX marking for valves

valve code		N and V seals	NL seals
<b>*KD2</b>	for gas	II 2G IIC T4 Gb (-20°C Ta +80°C)	II 2G IIC T4 Gb (-40°C Ta +80°C)
	for dusts	II 2D IIIC T154°C Db IP66/IP68 (-20°C Ta +80°C)	II 2D IIIC T154°C Db IP66/IP68 (-40°C Ta +80°C)
<b>*KD2 /T5</b>	for gas	II 2G IIC T5 Gb (-20°C Ta +55°C)	II 2G IIC T5 Gb (-40°C Ta +55°C)
	for dusts	II 2D IIIC T129°C Db IP66/IP68 (-20°C Ta +55°C)	II 2D IIIC T129°C Db IP66/IP68 (-40°C Ta +55°C)
<b>*KDM2</b>	mining	I M2 I T150°C Mb IP66/68 (-20°C Ta +75°C)	I M2 I T150°C Mb IP66/68 (-40°C Ta +75°C)





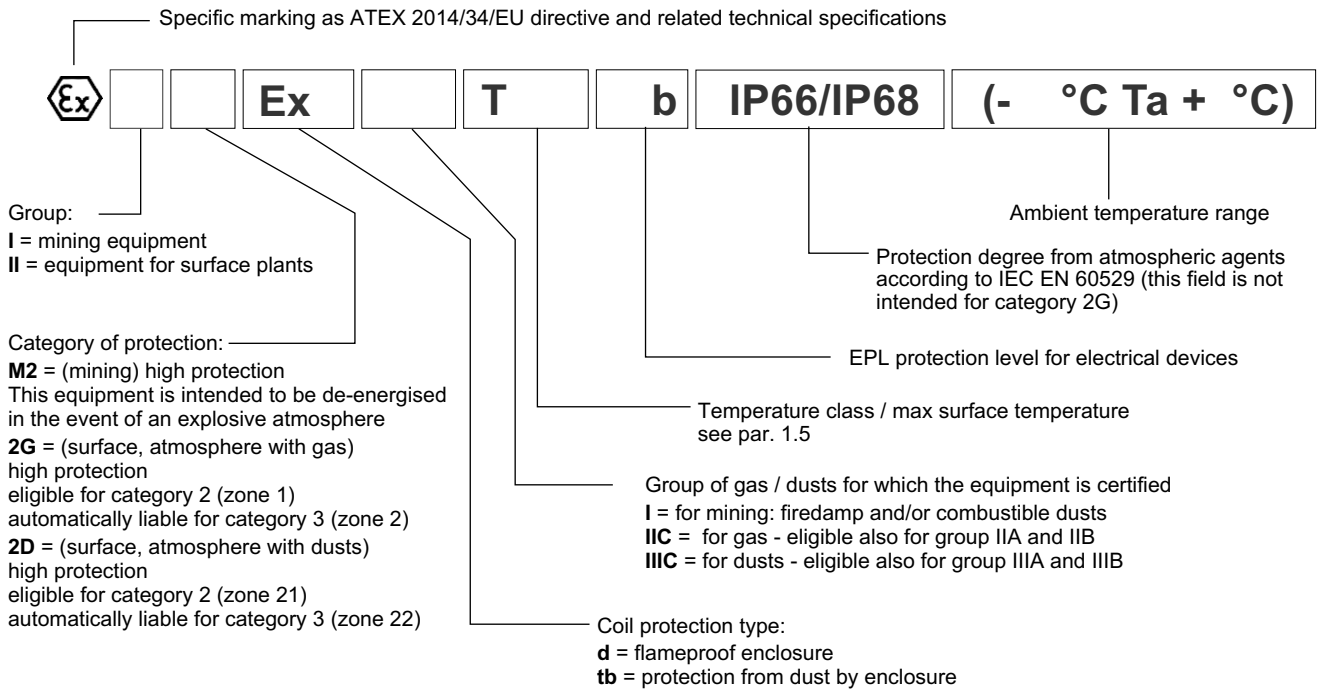
### 1.3 - ATEX classification of the coils

The coil of the explosion-proof valves is ATEX certified itself and as such is identified with its own tag, carries the relative ATEX marking. **The mechanical construction of the coil housing is made in order to ensure its resistance to possible internal explosion and to avoid any explosion propagation to the outside environment, matching an “Ex d” type protection (explosion-proof coil).**

Moreover, the solenoid is designed to maintain its surface temperature below the limits specified to the relevant class.

### 1.4 - ATEX marking on coils

for valve type <b>*KD2</b>	for gas for dusts	II 2G Ex d IIC T4 Gb (-40°C Ta +80°C) II 2D Ex tb IIIC T154°C Db IP66/IP68 (-40°C Ta +80°C)
for valve type <b>*KD2 /T5</b>	for gas for dusts	II 2G Ex d IIC T5 Gb (-40°C Ta +55°C) II 2D Ex tb IIIC T129°C Db IP66/IP68 (-40°C Ta +55°C)
for valve type <b>*KDM2</b>	mining	I M2 Ex d I T150°C Mb IP66/IP68 (-40°C Ta +75°C)



### 1.5 - Operating temperatures

These valves are classified according to their maximum surface temperature (EN 13463-1), which must be lower than the ignition temperature of the gases, vapors and dusts for which the area in which they will be used is classified.

The valves in group II can also be used for less limiting temperature classes (surface temperature allowed higher).

		temperature range	N and V seals	NL seals	Temperature class	eligible also for
ATEX II 2G ATEX II 2D	<b>*KD2</b>	of ambient	-20 / +80 °C	-40 / +80 °C	T4 (gas) T154°C (dusts)	T3, T2, T1 T200°C and higher
		of fluid				
	<b>*KD2 /T5</b>	of ambient	-20 / +55 °C	-40 / +55 °C	T5 (gas) T129°C (dusts)	T4, T3, T2, T1 T135°C and higher
		of fluid				
ATEX I M2	<b>*KDM2</b>	of ambient	-20 / +75 °C	-40 / +75 °C	T150°C	-
		of fluid				



## 2 - IECEx CLASSIFICATION AND TEMPERATURES

The IECEx certification requires the classification of the electrical equipment only.

Diplomatic supplies valves with IECEx certified coils, suitable for application and installation in potentially explosive atmospheres. The mechanical construction of the coil housing is made in order to ensure its resistance to possible internal explosion and to avoid any explosion propagation to the outside environment, matching an "Ex db" type protection (explosion-proof coil).

**Moreover, the solenoid is designed to maintain its surface temperature below the limits specified to the relevant class.**

**The supply always includes the operating and maintenance manual, that contains all the information needed for a correct use of the valve in potentially explosive environment.**

### 2.1 - IECEx classification

Certificate of conformity (CoC): IECEx TUN 15.0028X

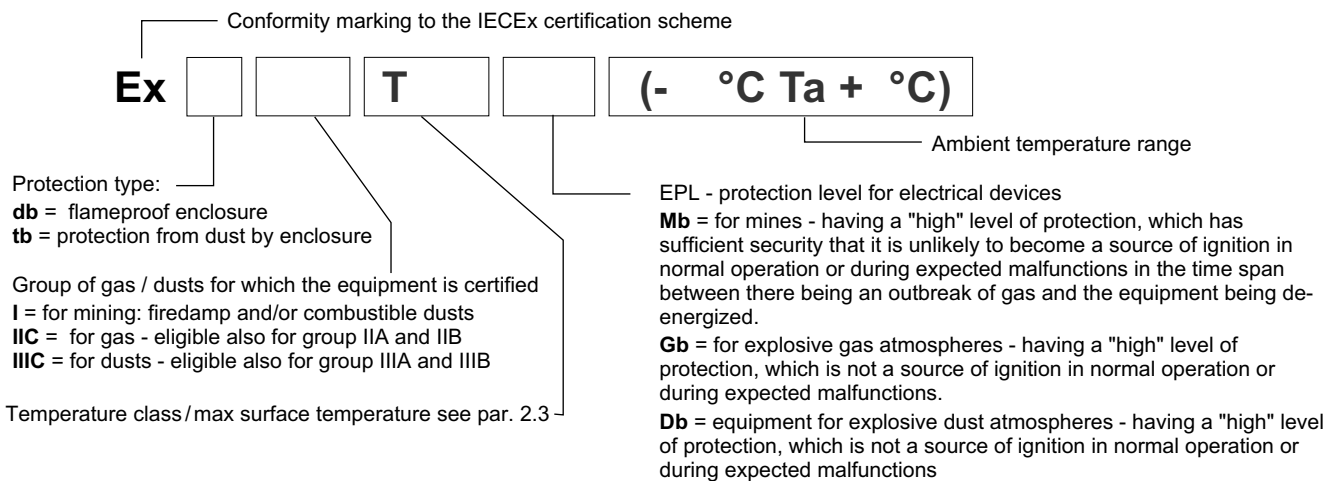
The valves are suitable for applications and installations in potentially explosive atmospheres that fall within:

IECEx Gb IECEx Db	<b>*KXD2</b>	equipment intended for use in areas in which explosive atmospheres caused by gases, vapours, mists or air/dust mixtures are likely to occur occasionally.
IECEx Mb	<b>*KXDM2</b>	equipment intended for use in underground parts of mines as well as those parts of surface installations of such mines likely to be endangered by firedamp and/or combustible dust. This equipment is intended to be de-energised in the event of an explosive atmosphere.

### 2.2 - IECEx marking

There is a plate with the IECEx mark on each coil.

<b>*KXD2</b> valves	for gas	Ex db IIC T4 Gb (-40°C Ta +80°C)
	for dusts	Ex tb IIIC T135°C Db (-40°C Ta +80°C)
<b>*KXD2 /T5</b> valves	for gas	Ex db IIC T5 Gb (-40°C Ta +55°C)
	for dusts	Ex tb IIIC T100°C Db (-40°C Ta +55°C)
<b>*KDM2</b> valves	mining	Ex db I Mb (-40°C Ta +80°C)



### 2.3 - Operating temperatures

These valves are classified according to their maximum surface temperature (EN 13463-1), which must be lower than the ignition temperature of the gases, vapors and dusts for which the area in which they will be used is classified.

Valves for surface plants can also be used for less limiting temperature classes (higher surface temperature allowed).

		temperature range	N and V seals	NL seals	Temperature class	eligible also for
IECEx Gb IECEx Db	<b>*KXD2</b>	of ambient	-20 / +80 °C	-40 / +80 °C	T4 (gas) T135°C (dusts)	T3, T2, T1 T200°C and higher
		of fluid				
IECEx Gb IECEx Db	<b>*KXD2 /T5</b>	of ambient	-20 / +55 °C	-40 / +55 °C	T5 (gas) T100°C (dusts)	T4, T3, T2, T1 T135°C and higher
		of fluid				
IECEx Mb	<b>*KXDM2</b>	of ambient	-20 / +80 °C	-40 / +80 °C	-	-
		of fluid				



### 3 - INMETRO CLASSIFICATION AND TEMPERATURES

The INMETRO certification requires the classification of the electrical equipment only.

Diplomatic supplies valves with INMETRO certified coils, suitable for application and installation in potentially explosive atmospheres. The mechanical construction of the coil housing is made in order to ensure its resistance to possible internal explosion and to avoid any explosion propagation to the outside environment, matching an "Ex d" type protection (explosion-proof coil).

Moreover, the solenoid is designed to maintain its surface temperature below the limits specified to the relevant class.

The supply always includes the operating and maintenance manual, that contains all the information needed for a correct use of the valve in potentially explosive environment.

#### 3.1 - INMETRO classification

Certificate of conformity: DNV 15.0094 X

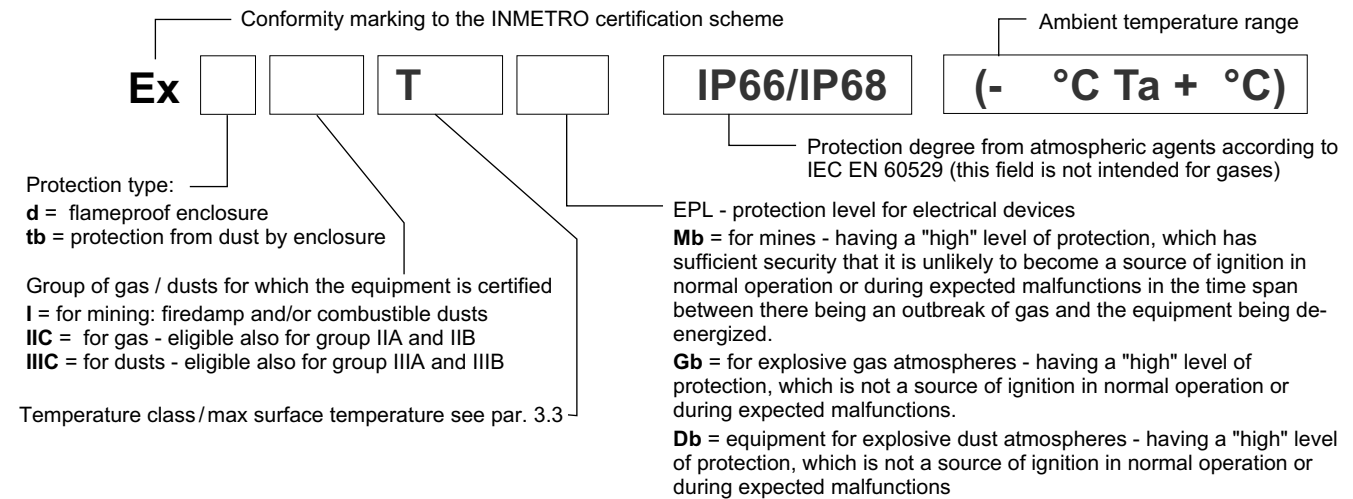
The valves are suitable for applications and installations in potentially explosive atmospheres that fall within:

INMETRO Gb INMETRO Db	<b>*KBD2</b>	equipment intended for use in areas in which explosive atmospheres caused by gases, vapours, mists or air/dust mixtures are likely to occur occasionally.
INMETRO Mb	<b>*KBDM2</b>	equipment intended for use in underground parts of mines as well as those parts of surface installations of such mines likely to be endangered by firedamp and/or combustible dust. This equipment is intended to be de-energised in the event of an explosive atmosphere.

#### 3.2 - INMETRO marking

There is a plate with the INMETRO mark on each coil.

<b>*KBD2</b> valves	for gas	Ex d IIC T4 Gb (-40°C Ta +80°C)
	for dusts	Ex tb IIIC T154°C Db IP66/IP68 (-40°C Ta +80°C)
<b>*KBD2 /T5</b> valves	for gas	Ex d IIC T5 Gb (-40°C Ta +55°C)
	for dusts	Ex tb IIIC T129°C Db IP66/IP68 (-40°C Ta +55°C)
<b>*KBDM2</b> valves	mining	Ex d I T150° Mb IP66/IP68 (-40°C Ta +75°C)



#### 3.3 - Operating temperatures

These valves are classified according to their maximum surface temperature (EN 13463-1), which must be lower than the ignition temperature of the gases, vapors and dusts for which the area in which they will be used is classified.

Valves for surface plants can also be used for less limiting temperature classes (higher surface temperature allowed).

		temperature range	N and V seals	NL seals	Temperature class	eligible also for
INMETRO Gb INMETRO Db	<b>*KBD2</b>	of ambient	-20 / +80 °C	-40 / +80 °C	T4 (gas) T154°C (dusts)	T3, T2, T1 T200°C and higher
		of fluid				
INMETRO Db	<b>*KBD2 /T5</b>	of ambient	-20 / +55 °C	-40 / +55 °C	T5 (gas) T129°C (dusts)	T4, T3, T2, T1 T135°C and higher
		of fluid				
INMETRO Mb	<b>*KBDM2</b>	of ambient	-20 / +75 °C	-40 / +75 °C	T150°C	-
		of fluid				



**DIPLOMATIC OLEODINAMICA S.p.A.**

20015 PARABIAGO (MI) • Via M. Re Depaolini 24

Tel. +39 0331.895.111

Fax +39 0331.895.339

www.diplomatic.com • e-mail: sales.exp@diplomatic.com

