

HPCD

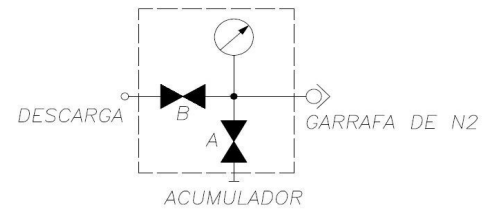
PRECHARGE DEVICE



1 – GENERAL FEATURES

It is used for a periodic verification of the accumulator precharge and its filling after the bladder substitution or it is used to change the value of precharge. For the filling, a connection with a cylinder filled with industrial dry nitrogen is necessary, with a higher pressure than the necessary precharge value, supplied with a pressure reducer (required, for safety reasons, during the filling of accumulators with PS < 210 bar). Moreover, the use of a pressure reducer facilitates the slow and gradual entry of nitrogen in the bladder, avoiding the possibility of damage in the bladder itself.

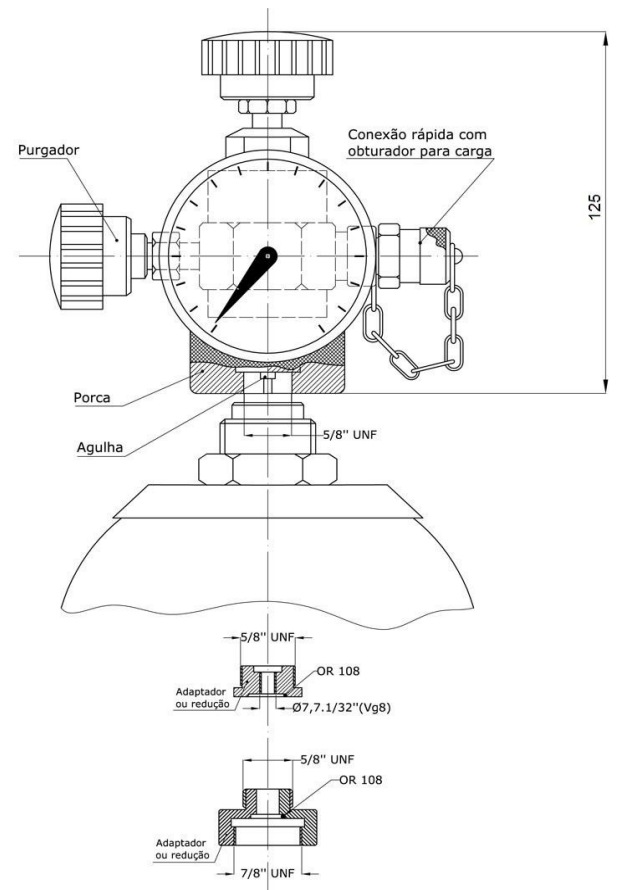
2 – HYDRAULIC SYMBOL



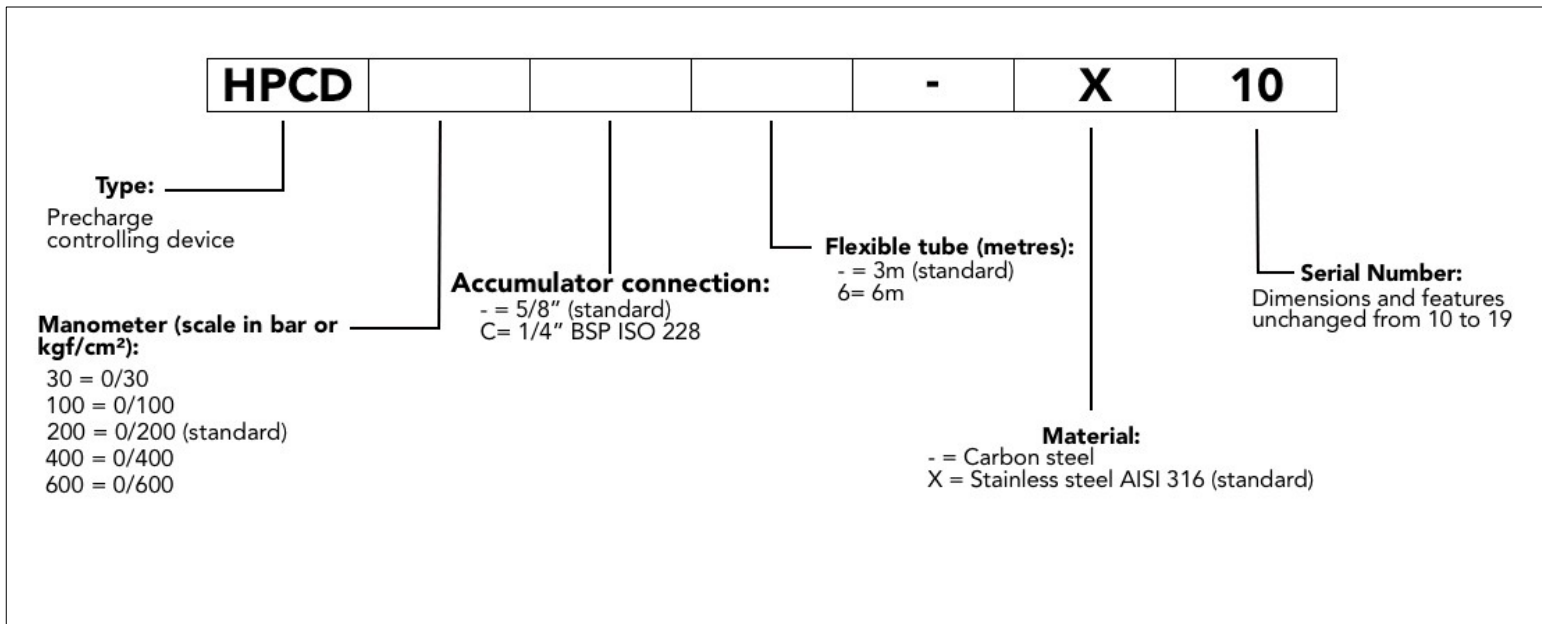
3 – CONSTRUCTION FEATURES

The standard version has:

- A small block to determine the pressure, with a nozzle for the connection with the accumulator gas valve, a manometer and a retention valve with fast connection for a flexible tube.
- A flexible tube, 3 metres long, with high pressure and connection for the nitrogen bottles.
- A repair kit.
- A case with all the previous components.



4 – IDENTIFICATION



5 – FEATURES

Maximum pressure	600 bar
Connection with the accumulator	5/8" UNF (standard) 7/8" UNF (connection included) Ø7,7x1/32" (Vg6) (connection included) Other connections (on request)
Connection with the nitrogen bottle	M24 – 14F male
Manometers	Ø63 connection 1/4" BSP 200 bar scale (standard)
Material	Carbon steel (standard) or stainless steel AISI 316
Weight	2 kg (complete)

6 – SPARE PARTS

Repair kit	H921690	Complete discharge	H921694
Retention valves	H921692	Flexible tube	H921696/...metres
Complete needle	H921695	Manometer	H92163/...bar

- 1 – HT reserves the right to change informations of this catalog without previous warning.
- 2 – Copy is forbidden.
- 3 – The manometer can be supplied on discretion of the manufacturer in bar or kgf/cm².
- 4 – If not indicated, dimensions in milimeters.

