



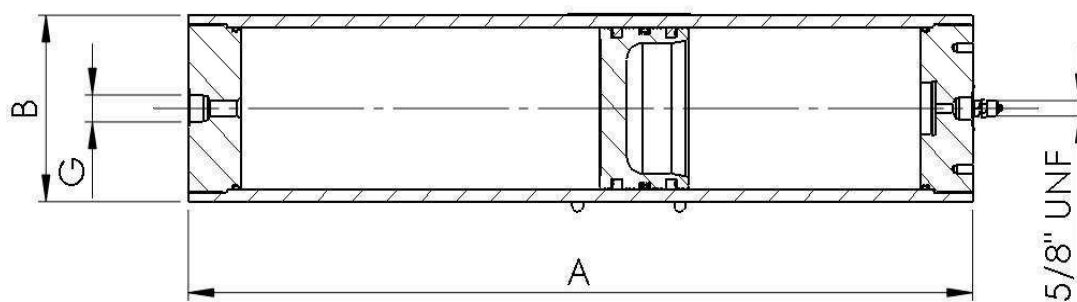
# HPAC

## PISTON ACCUMULATOR

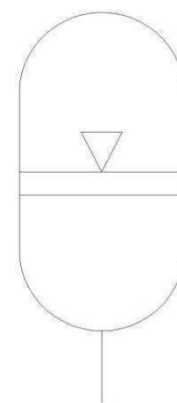
**Maximum working pressure:** 375 bar

**Nominal capacity:** 1 to 150 liters

### 1 – OPERATING PRINCIPLE



### 2 – HYDRAULIC SYMBOL



– Gas-loaded piston accumulators are manufactured with carbon steel, complying to the ASME standard for various applications: energy accumulator, pulsation damping, emergency energy reserve, volume compensator, pressure compensator, force equilibrium, shock damper, shock absorber, hydraulic spring and fluid separator.

### 3 – PERFORMANCE

Maximum working pressure PS	250 - 350 - 375 bar
Test pressure PT	PS x 1.5
Temperature	-10°C to +80°C
Piston velocity	up to 2m/s
Applicability	ASME Section VIII DIV. 1

### 4 – CONSTRUCTION FEATURES

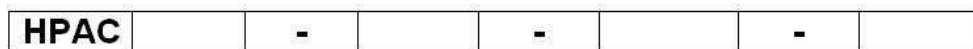
**This standard version includes:**

- Shell made of carbon steel St. 52.3 DIN 2393, internally burnished, externally painted with a protective coating blue RAL 5015.
- Caps/heads made of carbon steel.
- Piston made of aluminium.
- Gaskets P (material AU-NBR) compatible with mineral oil H, H-L and H-LP.

**On request, the accumulator can be supplied with:**

- External shell and piston coated with 40 micron chemical nickel.
- Internal shell coated with industrial hard chrome.
- Gaskets made of teflon (PTFE) or Viton (material: FKM) compatible with HSA to HSD fluids and high temperatures.
- Other solicitations.
- Flanged connections.

## 5 – IDENTIFICATION



Piston accumulator

Volume (litres):

1 - 2 - 3 - 4 - 5 - 6 - 10 = 10 series  
 10 - 15 - 20 - 25 - 30 - 40 - 50 - 60 - 80 = 18 series  
 30 - 40 - 50 - 60 - 80 - 100 - 120 - 150 = 25 series

Gasket material:

P = Nitrilica (standard)  
 V = Viton  
 T = PTFE (teflon)

Pressure (bar):

250 = 10, 18 and 25 series  
 350 = 25 series  
 375 = 10 and 18 series

Serial number

10 = piston internal diam. equals to 100mm  
 18 = piston internal diam. equals to 180mm  
 25 = piston internal diam. equals to 250mm

## 6 – DIMENSIONS

### 10 Series

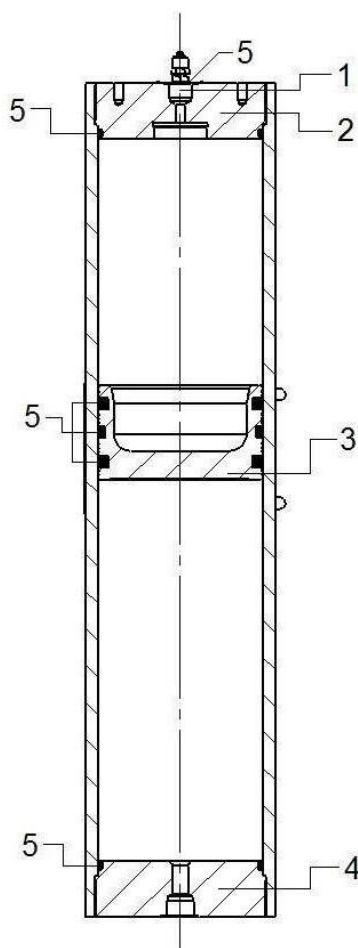
Model	Fluid volume (litres)	Maximum working pressure (bar)	Piston diameter (mm)	A (mm)	B (mm)	Fluid side connection G (BSP)	Weight (kg)
HPAC1...250-10	1	250	100	365	120	G 1"	16
HPAC2...250-10	2			493			19
HPAC3...250-10	3			620			22
HPAC4...250-10	4			747			26
HPAC5...250-10	5			874			29
HPAC6...250-10	6			1000			33
HPAC10...250-10	10	1511	47				
HPAC1...375-10	1	375	100	397	130		23
HPAC2...375-10	2			525			29
HPAC3...375-10	3			652			34
HPAC4...375-10	4			780			40
HPAC5...375-10	5			906			45
HPAC6...375-10	6			1032		50	
HPAC10...375-10	10	1543	72				

### 18 Series

Model	Fluid volume (litres)	Maximum working pressure (bar)	Piston diameter (mm)	A (mm)	B (mm)	Fluid side connection G (BSP)	Weight (kg)
HPAC10...250-18	10	250	180	705	216	G 1.1/2"	90
HPAC15...250-18	15			900			109
HPAC20...250-18	20			1100			126
HPAC25...250-18	25			1275			142
HPAC30...250-18	30			1490			160
HPAC40...250-18	40			1885			195
HPAC50...250-18	50			2277			230
HPAC60...250-18	60			2670			264
HPAC80...250-18	80			3455			333
HPAC10...375-18	10			375			180
HPAC15...375-18	15	950	118				
HPAC20...375-18	20	1146	135				
HPAC25...375-18	25	1323	151				
HPAC30...375-18	30	1540	170				
HPAC40...375-18	40	1932	204				
HPAC50...375-18	50	2325	239				
HPAC60...375-18	60	2718	273				
HPAC80...375-18	80	3500	342				

25 Series							
Model	Fluid volume (litres)	Maximum working pressure (bar)	Piston diameter (mm)	A (mm)	B (mm)	Fluid side connection G (BSP)	Weight (kg)
HPAC30...250-25	30	250	250	1042	294	G 1.1/2"	230
HPAC40...250-25	40			1245			260
HPAC50...250-25	50			1450			290
HPAC60...250-25	60			1653			320
HPAC80...250-25	80			2060			380
HPAC100...250-25	100			2468			440
HPAC120...250-25	120			2875			500
HPAC150...250-25	150			3485			590
HPAC30...375-25	30	350	250	1092	320		247
HPAC40...375-25	40			1295			277
HPAC50...375-25	50			1500			307
HPAC60...375-25	60			1700			337
HPAC80...375-25	80			2110			397
HPAC100...375-25	100			2518			457
HPAC120...375-25	120			2925			517
HPAC150...375-25	150			3535			607

## 7 - COMPONENTS AND SPARE PARTS



Item	Description	Qt	Reference
1	Gas filling valve	1	H2072
2	Gas side head	1	H4010
3	Piston	1	H4015
4	Fluid side head	1	H4020
5	Gasket sets	1	H4030

1 - HT reserves the right to change informations of this catalog without previous warning.

2 - Copy is forbidden.

3 - If not indicated, dimensions in milimetres.

